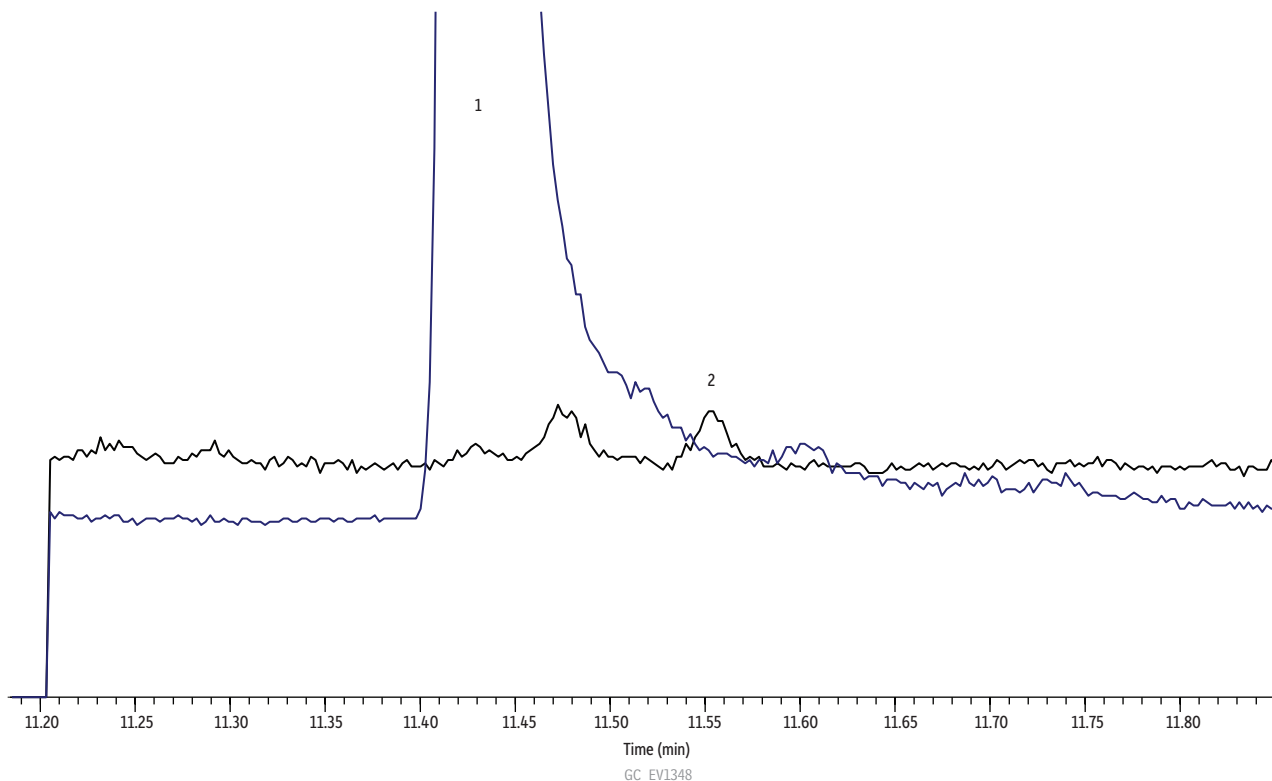


# 0.50 ng/L N-Nitrosodimethylamine (NDMA) Laboratory Fortified Drinking Water Sample Extract on Rxi®-5Sil MS

Peaks	Conc. (ng/mL)	m/z
1. N-Nitrosodimethylamine-d6	10	80
2. N-Nitrosodimethylamine	0.025	74

Sample fortified at 0.5 ng/L N-nitrosodimethylamine. Final extract concentration is 0.025 µg/mL.



**Column** Rxi®-5Sil MS, 30 m, 0.25 mm ID, 1.00 µm (cat.# 13653) using Rxi® guard column 10 m, 0.53 mm ID (cat.# 10073) with SGE µ-union

**Sample Diluent:** Dichloromethane

**Injection**

Inj. Vol.: 50 µL splitless (hold 1.5 min)

Liner: Custom Premium single taper liner with 15 mg quartz wool

Inj. Temp.: 275 °C

Purge Flow: 100 mL/min

**Oven**

Oven Temp.: 35 °C (hold 1.5 min) to 50 °C at 50 °C/min (hold 7.1 min) to 320 °C at 11.12 °C/min (hold 1.5 min)

**Carrier Gas**

Flow Program: He, flow program 5.08 mL/min (hold 8.9 min) to 2.0 mL/min at 1.0 mL/min/min

**Detector** MS

Mode: SIM

SIM Program: 42, 43, 46, 48, 74, 80 m/z

Transfer Line

Temp.: 320 °C

Analyzer Type: Quadrupole

Source Type: Inert

Source Temp.: 230 °C

Quad Temp.: 150 °C

Solvent Delay

Time: 9.9 min

Tune Type: BFB

Ionization Mode: EI

**Instrument** Agilent 7890A GC & 5975C MSD