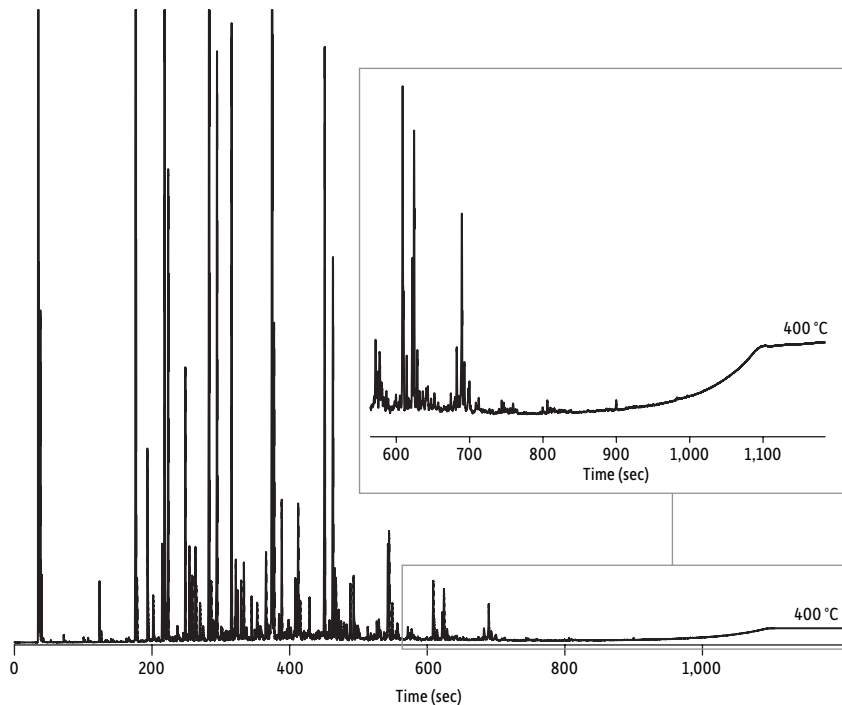


Creosote Oil Standard on Rxi-1HT (15 m x 0.25 mm x 0.10 μ m)



GC_EV1368

Column Rxi-1HT, 15 m, 0.25 mm ID, 0.10 μ m (cat.# 13950)
Sample Creosote oil standard (cat.# 31838)
Diluent: Methylene chloride
Conc.: 50,000 ng/ μ L
Injection
Inj. Vol.: 1 μ L split (split ratio 250:1)
Liner: Premium 4 mm Precision liner w/wool (cat.# 23305)
Inj. Temp.: 275 $^{\circ}$ C
Split Vent
Flow Rate: 437.5 mL/min
Oven
Oven Temp.: 40 $^{\circ}$ C (hold 0.1 min) to 400 $^{\circ}$ C at 20 $^{\circ}$ C/min (hold 1.9 min)
Carrier Gas H₂, constant flow
Flow Rate: 1.75 mL/min
Detector FID @ 420 $^{\circ}$ C
Constant Column +
Constant Make-up: 50 mL/min
Make-up Gas Type: N₂
Hydrogen flow: 40 mL/min
Air flow: 450 mL/min
Data Rate: 20 Hz
Instrument Agilent/HP6890 GC
Notes Actual column length was calculated to be 15.7 m using holdup time and EZGC flow calculator (<http://www.restek.com/ezgc-mtfc>).