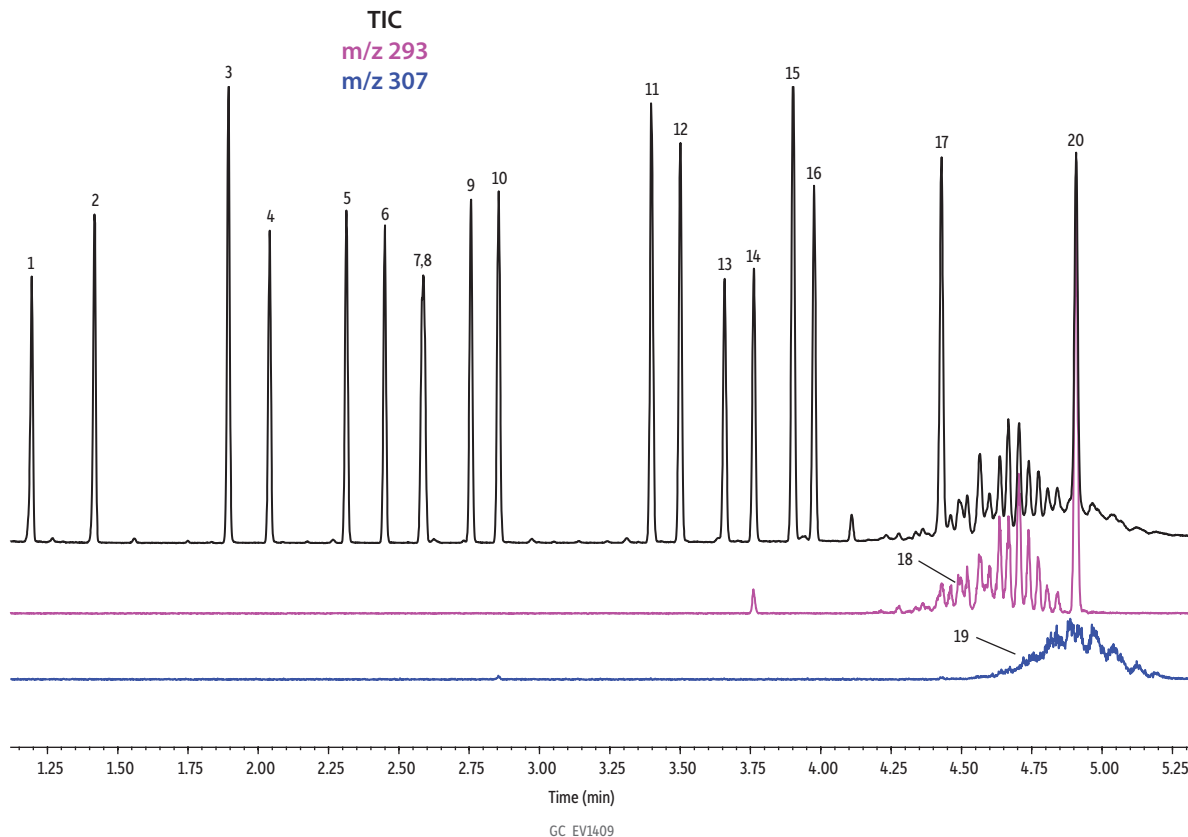


EPA and EU Phthalates on Rxi-XLB



Peaks

1. Dimethyl phthalate
2. Diethyl phthalate
3. Benzyl benzoate
4. Diisobutyl phthalate
5. Di-*n*-butyl phthalate
6. Bis(2-methoxyethyl) phthalate
7. Bis[4-methyl-2-pentyl] phthalate isomer 1
8. Bis[4-methyl-2-pentyl] phthalate isomer 2
9. Bis(2-ethoxyethyl) phthalate
10. Di-*n*-pentyl phthalate
11. Di-*n*-hexyl phthalate
12. Butyl benzyl phthalate
13. Hexyl-2-ethylhexyl phthalate
14. Bis(2-butoxyethyl) phthalate
15. Bis(2-ethylhexyl) phthalate
16. Dicyclohexyl phthalate
17. Di-*n*-octyl phthalate
18. Diisononyl phthalate
19. Diisodecyl phthalate
20. Dinonyl phthalate

Column

Standard/Sample

Rxi-XLB, 30 m, 0.25 mm ID, 0.25 μ m (cat.# 13723)
 Benzyl benzoate (cat.# 31847)
 EPA Method 8061A phthalate esters mixture (cat.# 33227)
 Diisononyl phthalate
 Diisodecyl phthalate
 Hexyl-2-ethylhexyl phthalate
 Methylene chloride

Diluent:
 Conc.:

Injection
 Inj. Vol.: 1 μ L split (split ratio 20:1)
 Liner: Premium 3.5 mm Precision liner w/wool (cat.# 23320.1)
 Inj. Temp.: 280 °C
 Split Vent Flow Rate: 3 mL/min

Oven
 Oven Temp.: 200 °C (hold 0.5 min) to 330 °C at 30 °C/min (hold 1 min)

Carrier Gas
 Linear Velocity: He, constant linear velocity
 66.7 cm/sec, 39.5 psi, 272.3 kPa @ 200 °C

Detector
 Mode: MS
 Scan

Scan Program:

Group	Start Time (min)	Scan Range (amu)	Scan Rate (scans/sec)
1	0.9	59-400	-

Transfer Line Temp.:

300 °C
 Analyzer Type: Quadrupole
 Source Temp.: 280 °C
 Electron Energy: 70 eV
 Solvent Delay Time: 0.9 min
 Tune Type: PFTBA
 Ionization Mode: EI

Instrument

Shimadzu 2010 GC & QP2010+ MS

The flow rate is 3 mL/min @ 200 °C. The MS scan interval is 0.1 sec.

Acknowledgement
 The authors would like to thank Shimadzu Corporation for their consultation with the operation of the QP2010 Plus GC-MS instrument.