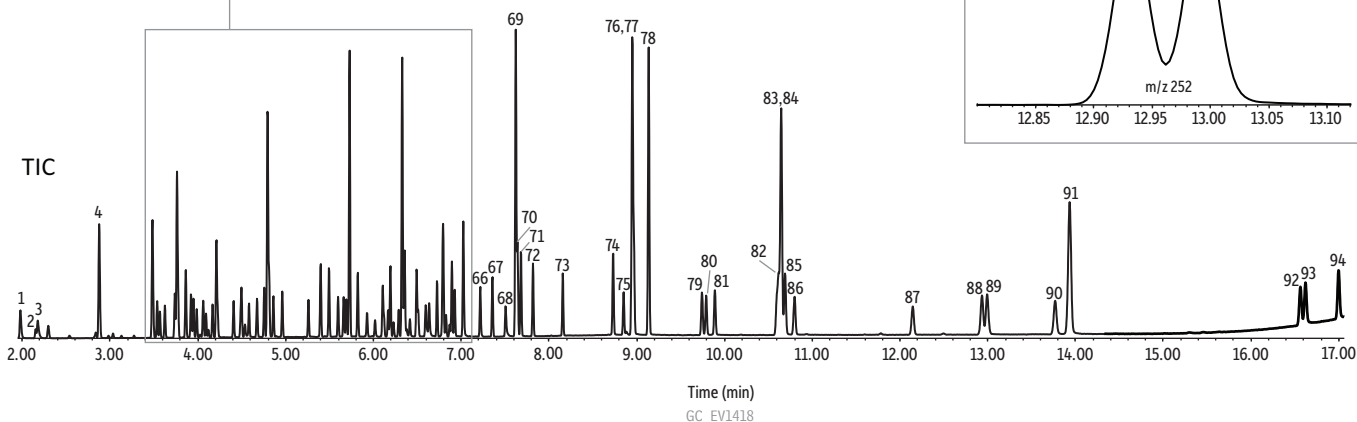
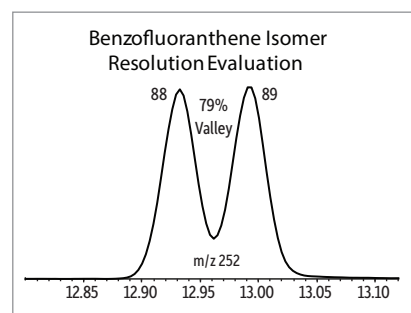
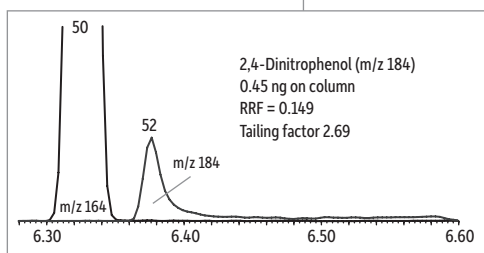
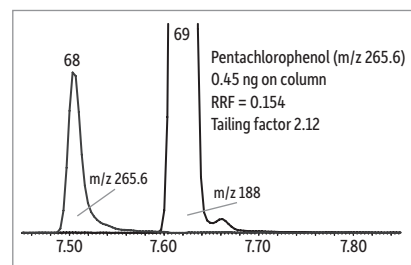
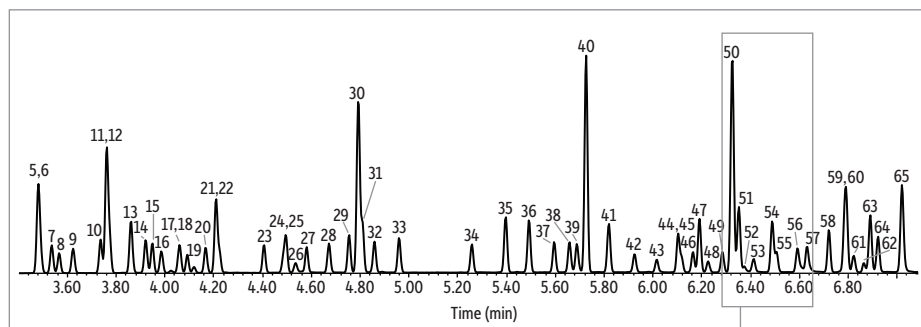


# Semivolatiles on Rxi®-5ms (Split Injection)



Peaks	tr (min)	Peaks	tr (min)	Peaks	tr (min)	Column Sample
1. 1,4-Dioxane-D8 (IS)	1.98	33. Hexachlorobutadiene	4.96	64. N,N'-Diphenylhydrazine (as Azobenzene)	6.93	Rxi®-5ms, 30 m, 0.25 mm ID, 0.25 µm (cat.# 13423)
2. N-Nitrosodimethylamine	2.15	34. 4-Chloro-3-methylphenol	5.26	65. 2,4,6-Tribromophenol (SS)	7.02	Revised SV internal standard mix (cat.# 31886)
3. Pyridine	2.18	35. 2-Methylnaphthalene	5.4	66. 4-Bromophenyl phenyl ether	7.22	Revised B/N surrogate mix (cat.# 31888)
4. 2-Fluorophenol (SS)	2.87	36. 1-Methylnaphthalene	5.49	67. Hexachlorobenzene	7.36	Acid surrogate mix (4/89 SOW) (cat.# 31063)
5. Phenol-D6 (SS)	3.48	37. Hexachlorocyclopentadiene	5.6	68. Pentachlorophenol	7.51	8270 MegaMix® (cat.# 31850)
6. Phenol	3.49	38. 2,4,6-Trichlorophenol	5.66	69. Phenanthrene-D10 (IS)	7.62	8270 Benzidines mix (cat.# 31852)
7. Aniline	3.54	39. 2,4,5-Trichlorophenol	5.69	70. Phenanthrene	7.64	Benzoic acid (cat.# 31879)
8. bis-(2-chloroethoxy)ether	3.57	40. 2-Fluorobiphenyl (SS)	5.73	71. Anthracene	7.68	Dichloromethane
9. 2-Chlorophenol	3.62	41. 2-Chloronaphthalene	5.82	72. Carbazole	7.82	5.0 ng/µL (IS and SS concentrations are 20 ng/µL)
10. 1,3-Dichlorobenzene	3.74	42. 2-Nitroaniline	5.93	73. di-n-Butyl phthalate	8.16	Diluent:
11. 1,4-Dichlorobenzene-D4 (IS)	3.76	43. 1,4-Dinitrobenzene	6.02	74. Fluoranthene	8.73	Conc.:
12. 1,4-Dichlorobenzene	3.77	44. Dimethyl phthalate	6.11	75. Benzidine	8.85	Injection
13. Benzyl Alcohol	3.86	45. 1,3-Dinitrobenzene	6.12	76. Pyrene-D10 (SS)	8.95	Inj. Vol.:
14. 1,2-Dichlorobenzene	3.92	46. 2,6-Dinitrotoluene	6.17	77. Pyrene	8.97	Liner:
15. 2-Methylphenol	3.95	47. Acenaphthylene	6.19	78. p-Terphenyl-D14 (SS)	9.14	Inj. Temp.:
16. Bis(2-Chloroisopropyl)ether	3.98	48. 1,2-Dinitrobenzene	6.23	79. 3,3'-Dimethylbenzidine	9.74	Oven
17. 4-Methylphenol	4.06	49. 3-Nitroaniline	6.29	80. Butyl benzyl phthalate	9.79	Oven Temp.:
18. 3-Methylphenol	4.06	50. Acenaphthene-D10 (IS)	6.33	81. Bis(2-ethylhexyl) adipate	9.89	50 °C (hold 0.5 min) to 265 °C at 28 °C/min to 285 °C at 3 °C/min to 330 °C at 20 °C/min (hold 5 min)
19. N-Nitrosodi-N-propylamine	4.09	51. Acenaphthene	6.35	82. 3,3'-Dichlorobenzidine	10.6	Carrier Gas
20. Hexachloroethane	4.17	52. 2,4-Dinitrophenol	6.38	83. Benz[a]anthracene	10.62	Flow Rate:
21. Nitrobenzene-D5 (SS)	4.21	53. 4-Nitrophenol	6.42	84. Chrysene-D12 (IS)	10.65	Detector
22. Nitrobenzene	4.22	54. Dibenzofuran	6.49	85. Chrysene	10.69	Mode:
23. Isophorone	4.41	55. 2,4-Dinitrotoluene	6.51	86. Bis(2-ethylhexyl) phthalate	10.8	Scan Program:
24. 2-Nitrophenol	4.49	56. 2,3,5,6-Tetrachlorophenol	6.59	87. Di-n-octyl phthalate	12.14	Group
25. 2,4-Dimethylphenol	4.5	57. 2,3,4,6-Tetrachlorophenol	6.63	88. Benzo[b]fluoranthene	12.93	1
26. Benzoic acid	4.54	58. Diethyl Phthalate	6.72	89. Benzo[k]fluoranthene	12.99	Start Time
27. Bis(2-chloroethoxy)methane	4.58	59. 4-Chlorophenyl phenyl ether	6.79	90. Benzo[a]pyrene	13.77	(min)
28. 2,4-Dichlorophenol	4.67	60. Fluorene	6.8	91. Perylene-D12 (IS)	13.93	1.5
29. 1,2,4-Trichlorobenzene	4.76	61. 4-Nitroaniline	6.83	92. Indeno[1,2,3-cd]pyrene	16.56	Scan Range
30. Naphthalene-D8 (IS)	4.79	62. 4,6-Dinitro-2-methylphenol	6.87	93. Dibenz[a,h]anthracene	16.62	(amu)
31. Naphthalene	4.81	63. N-Nitrosodiphenylamine (as Diphenylamine)	6.89	94. Benzo[ghi]perylene	17	Scan Rate
32. 4-Chloroaniline	4.86					(scans/sec)