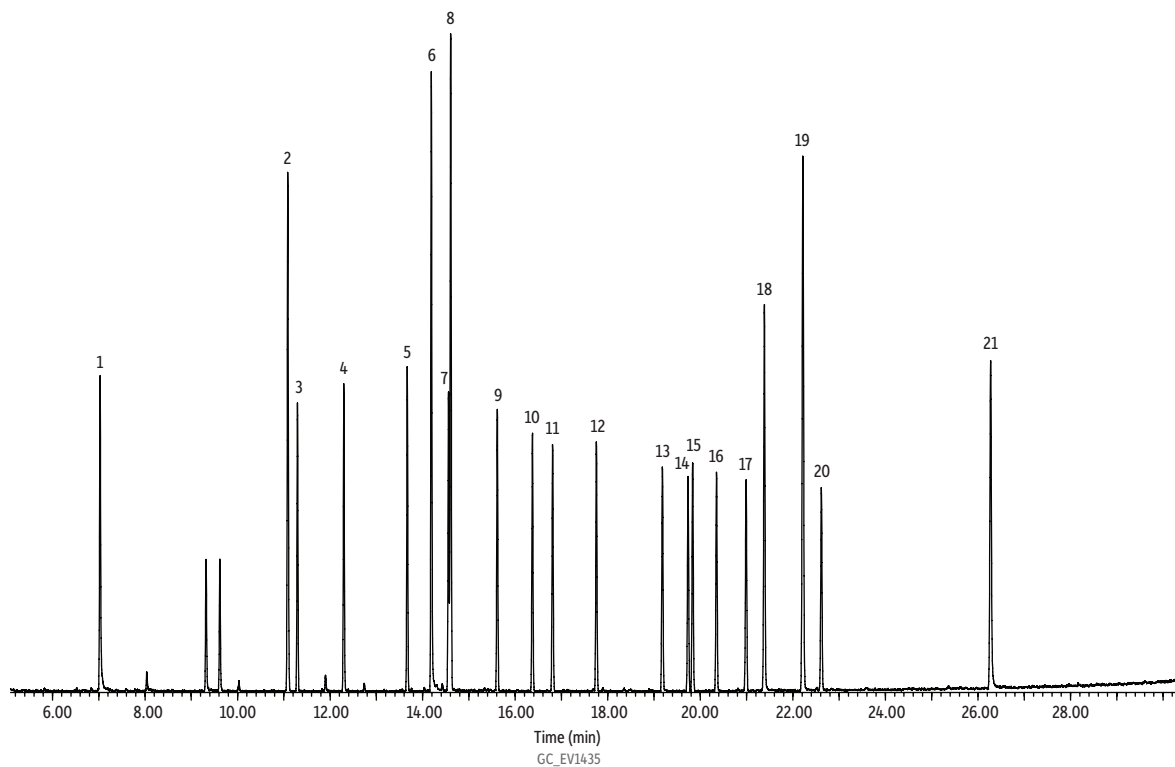


EPA Method 525.3 PCB Calibration Standard (with 525.3 Internal and Surrogate Standards) on Rxi®-5Sil MS



Peaks	t <sub>r</sub> (min)
1. 1,3-Dimethyl-2-nitrobenzene (SS)	7.03
2. Acenaphthene-D10 (IS)	11.08
3. 2-Chlorobiphenyl	11.29
4. 4-Chlorobiphenyl	12.30
5. 2,4'-Dichlorobiphenyl	13.67
6. Pentachlorophenol-C13 (IS)	14.19
7. 2,2',5'-Trichlorobiphenyl	14.56
8. Phenanthrene-D10 (IS)	14.60
9. 2,4,4'-Trichlorobiphenyl	15.61
10. 2,2',5,5'-Tetrachlorobiphenyl	16.37
11. 2,2',3,5'-Tetrachlorobiphenyl	16.81
12. 2,3',4',5'-Tetrachlorobiphenyl	17.76
13. 2,3,3',4',6-Pentachlorobiphenyl	19.18
14. 2,2',3,4',5',6-Hexachlorobiphenyl	19.74
15. 2,3',4,4',5'-Pentachlorobiphenyl	19.84
16. 2,2',4,4',5,5'-Hexachlorobiphenyl	20.35
17. 2,2',3,4,4',5'-Hexachlorobiphenyl	20.99
18. Triphenyl phosphate (SS)	21.38
19. Chrysene-D12 (IS)	22.22
20. 2,2',3,4,4',5,5'-Heptachlorobiphenyl	22.61
21. Benzo[a]pyrene-D12 (SS)	26.27

**Column** Rxi®-5Sil MS, 30 m, 0.25 mm ID, 0.25 µm (cat.# 13623)  
**Sample** EPA Method 525.3 PCB cal standard (cat.# 32546)  
 EPA Method 525.3 PAH IS mix (cat.# 32547)  
 EPA Method 525.3 PCP IS (cat.# 32548)  
 EPA Method 525.3 surrogate standard (cat.# 32549)  
 Ethyl acetate  
 2 µg/mL

**Diluent:**  
**Conc.:**  
**Injection**  
 Inj. Vol.: 1 µL pulsed splitless (hold 1 min)  
 Liner: Premium 4 mm single taper w/wool (cat.# 23303.1)  
 Inj. Temp.: 275 °C  
 Pulse Pressure: 30 psi (206.8kPa)  
 Pulse Time: 1 min  
 Purge Flow: 80 mL/min

**Oven**  
 Oven Temp.: 70 °C (hold 1 min) to 200 °C at 10 °C/min to 320 °C at 7 °C/min (hold 3 min)

**Carrier Gas** He, constant flow  
**Flow Rate:** 1.2 mL/min

**Detector** MS  
**Mode:** Scan

**Scan Program:**

Goup	Start Time (min)	Scan Range (amu)	Scan Rate (scans/sec)
1	5	45-550	5.5

**Transfer Line**  
 Temp.: 280 °C  
**Analyzer Type:** Quadrupole  
**Source Type:** Extractor  
**Extractor Lens:** 6 mm ID  
**Source Temp.:** 350 °C  
**Quad Temp.:** 200 °C  
**Solvent Delay**  
 Time: 5 min  
**Tune Type:** DFTPP  
**Ionization Mode:** EI  
**Instrument** Agilent 7890B GC & 5977A MSD