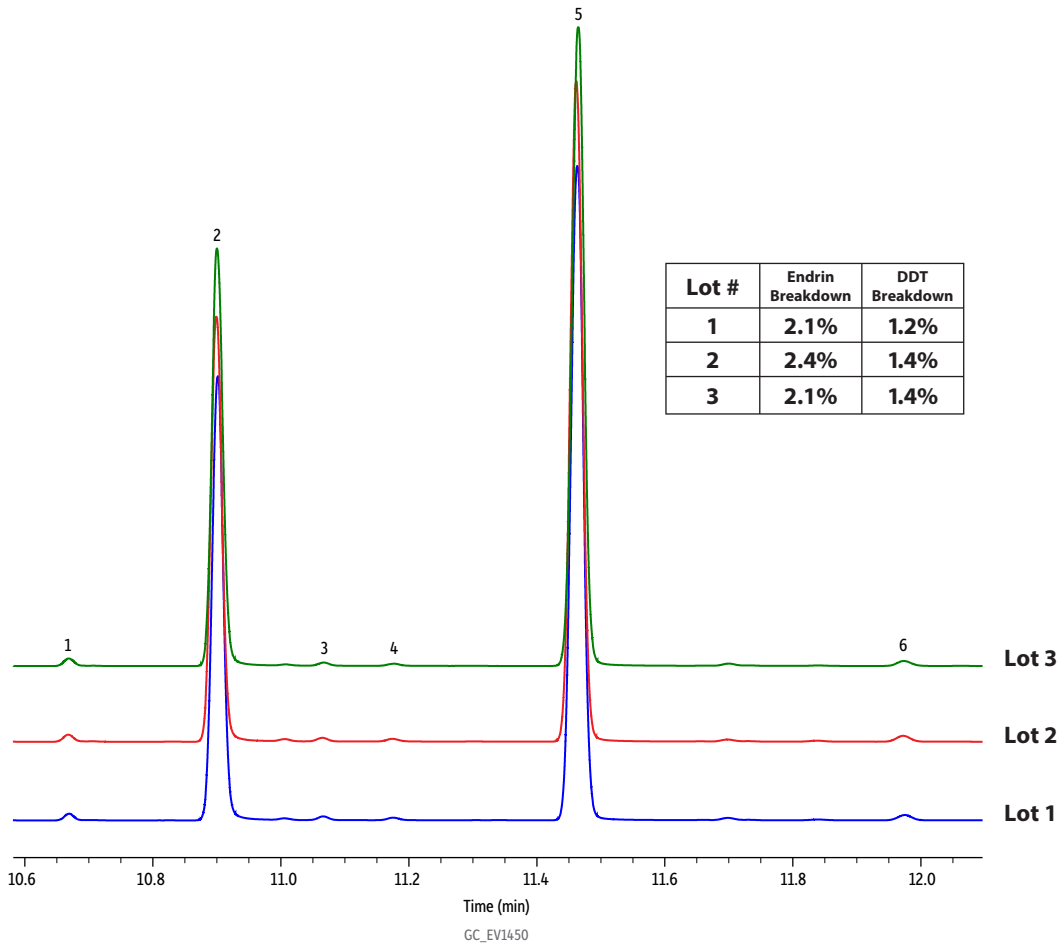


Topaz Liner Lot-to-Lot Reproducibility for Endrin and DDT Breakdown



Peaks	t _R (min)	Conc. (ng/mL)
1. 4,4'-DDE	10.670	*
2. Endrin	10.902	50
3. 4,4'-DDD	11.067	*
4. Endrin aldehyde	11.177	*
5. 4,4'-DDT	11.464	100
6. Endrin ketone	11.976	*

*Breakdown products

Column Rxi-5ms, 15 m, 0.25 mm ID, 0.25 µm (cat.# 13420)
Sample Endrin (50 ng/mL) and DDT (100 ng/mL)
Diluent: *n*-Hexane
Injection
 Inj. Vol.: 1 µL splitless (hold 1.2 min)
 Liner: Topaz 4.0 mm single taper with wool (cat.# 23303)
 Inj. Temp.: 250 °C
 Purge Flow: 20 mL/min
Oven
 Oven Temp.: 50 °C (hold 1.2 min) to 240 °C at 20 °C/min to 265 °C at 6 °C/min
Carrier Gas He, constant flow
Flow Rate: 1.5 mL/min
Detector Micro-ECD @ 300 °C
Make-up Gas Flow Rate: 60 mL/min
Make-up Gas Type: N₂
Data Rate: 20 Hz
Instrument Agilent 7890A GC

