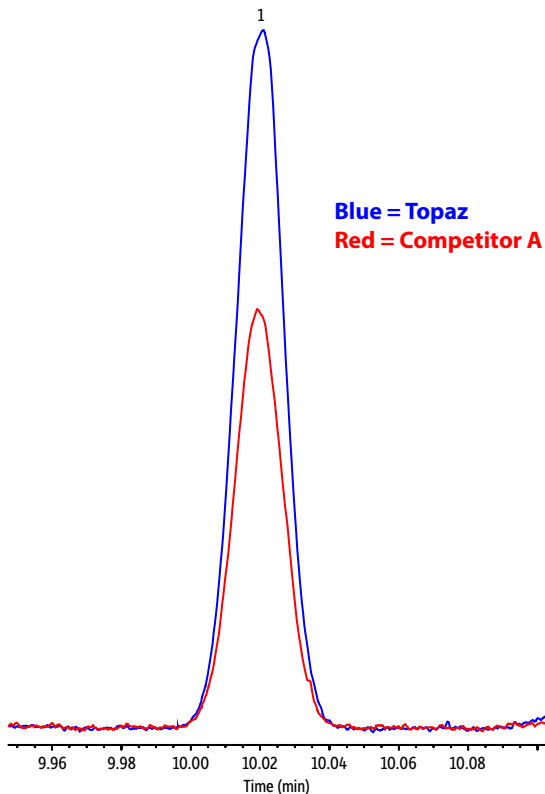


Topaz Carbaryl Response vs. Competitor Carbaryl Response



GC_EV1452

Peaks	t _R (min)	Conc. (µg/mL)
1. Carbaryl	10.019	0.5

Column	Rxi-5ms, 15 m, 0.25 mm ID, 0.25 µm (cat.# 13420)
Sample	Topaz FID liner test mix
Diluent:	Methylene chloride
Conc.:	0.5 µg/mL
Injection	
Inj. Vol.:	1 µL splitless (hold 1 min)
Liner:	Topaz 4.0 mm ID single taper with wool (cat.# 23303)
Inj. Temp.:	250 °C
Purge Flow:	40 mL/min
Oven	
Oven Temp.:	40 °C (hold 1 min) to 300 °C at 18.5 °C/min (hold 1 min)
Carrier Gas	He, constant flow
Flow Rate:	2 mL/min
Detector	FID @ 340 °C
Make-up Gas Flow Rate:	45 mL/min
Make-up Gas Type:	N ₂
Hydrogen flow:	40 mL/min
Air flow:	400 mL/min
Data Rate:	50 Hz
Instrument	Agilent 7890A GC