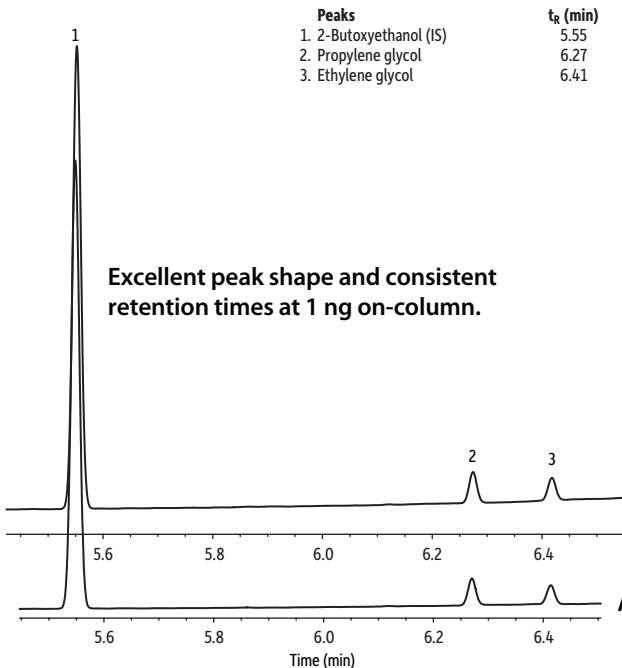


Comparison of Glycols Before and After 600 Water Injections on Rtx-Wax



GC_EV1454_1455

Column Sample

Rtx-Wax, 30 m, 0.53 mm ID, 1.00 μ m (cat.# 12455)
Glycols standard (cat.# 30471)
2-Butoxyethanol
Water:methanol (90:10)
50 μ g/mL (1 ng on-column)

Diluent: Conc.:

Injection

Inj. Vol.:

Liner:

Inj. Temp.:

Oven

Oven Temp.:

Carrier Gas

Flow Rate:

Linear Velocity:

Detector

Make-up Gas Flow Rate:

Make-up Gas Type:

Hydrogen flow:

Air flow:

Data Rate:

Instrument

1 μ L split (split ratio 50:1)
Premium 4 mm Precision inlet liner w/wool (cat.# 23305)
250 °C

40 °C (hold 1 min) to 250 °C at 30 °C/min

He, constant flow

5.7 mL/min

40 cm/sec

FID @ 250 °C

45 mL/min

N₂

40 mL/min

450 mL/min

20 Hz

Agilent/HP6890 GC

Before Water Injections

After 600 Water Injections



© 2017 Restek Corporation. All rights reserved.
www.restek.com

Restek patents and trademarks are the property of Restek Corporation. (See www.restek.com/Patents-Trademarks for full list.) Other trademarks in Restek literature or on its website are the property of their respective owners. Restek registered trademarks are registered in the U.S. and may also be registered in other countries.