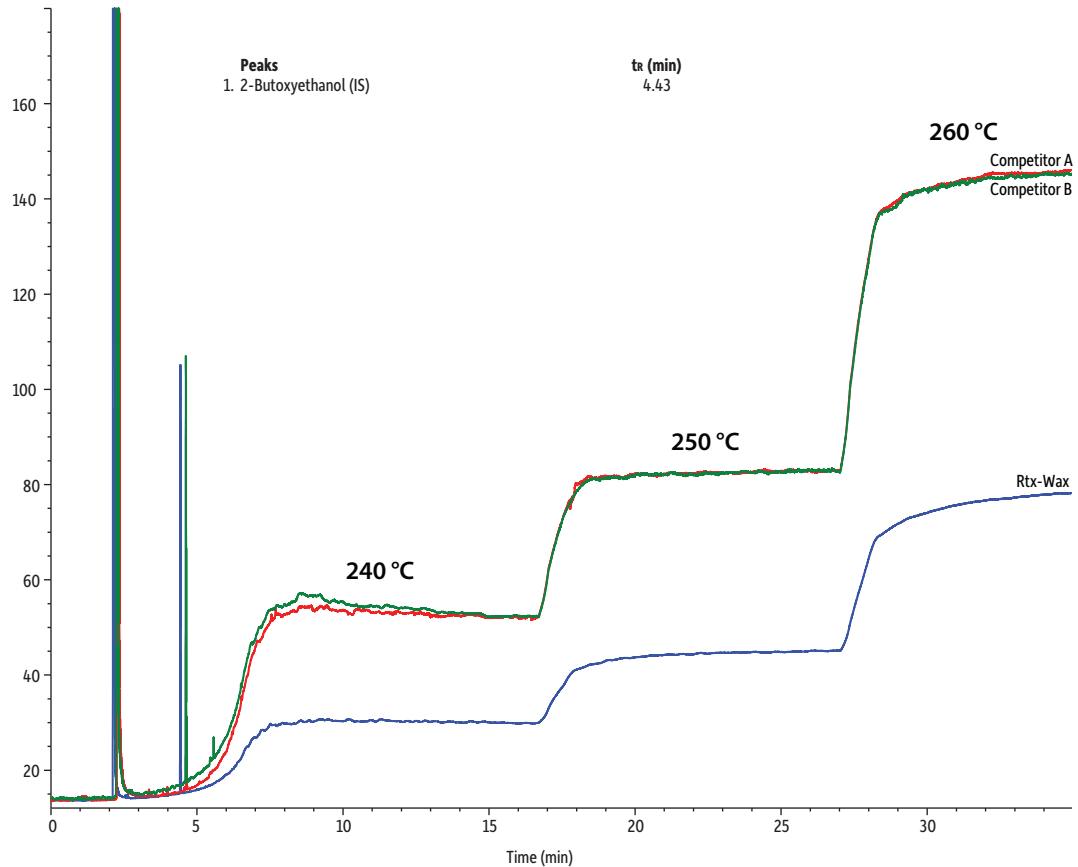


Rtx-Wax Bleed Profile Comparison



GC_EV1456_1458

Column	Rtx-Wax, 30 m, 0.53 mm ID, 1.00 µm (cat.# 12455)
Sample	2-Butoxyethanol
Diluent:	Water:methanol (90:10)
Conc.:	200 µg/mL (10 ng on-column)
Injection	
Inj. Vol.:	1 µL split (split ratio 20:1)
Liner:	Premium 4.0 mm ID Precision inlet liner w/wool (cat.# 23305)
Inj. Temp.:	240 °C
Oven	
Oven Temp.:	40 °C to 240 °C at 30 °C/min (hold 10 min) to 250 °C at 30 °C/min (hold 10 min) to 260 °C at 30 °C/min (hold 10 min)
Carrier Gas	He, constant flow
Linear Velocity:	40 cm/sec
Detector	FID @ 240 °C
Make-up Gas Flow Rate:	45 mL/min
Make-up Gas Type:	N ₂
Hydrogen flow:	40 mL/min
Air flow:	450 mL/min
Data Rate:	20 Hz
Instrument	Agilent/HP6890 GC
Notes	All column dimensions: 30 m, 0.53 mm ID, 1.00 µm