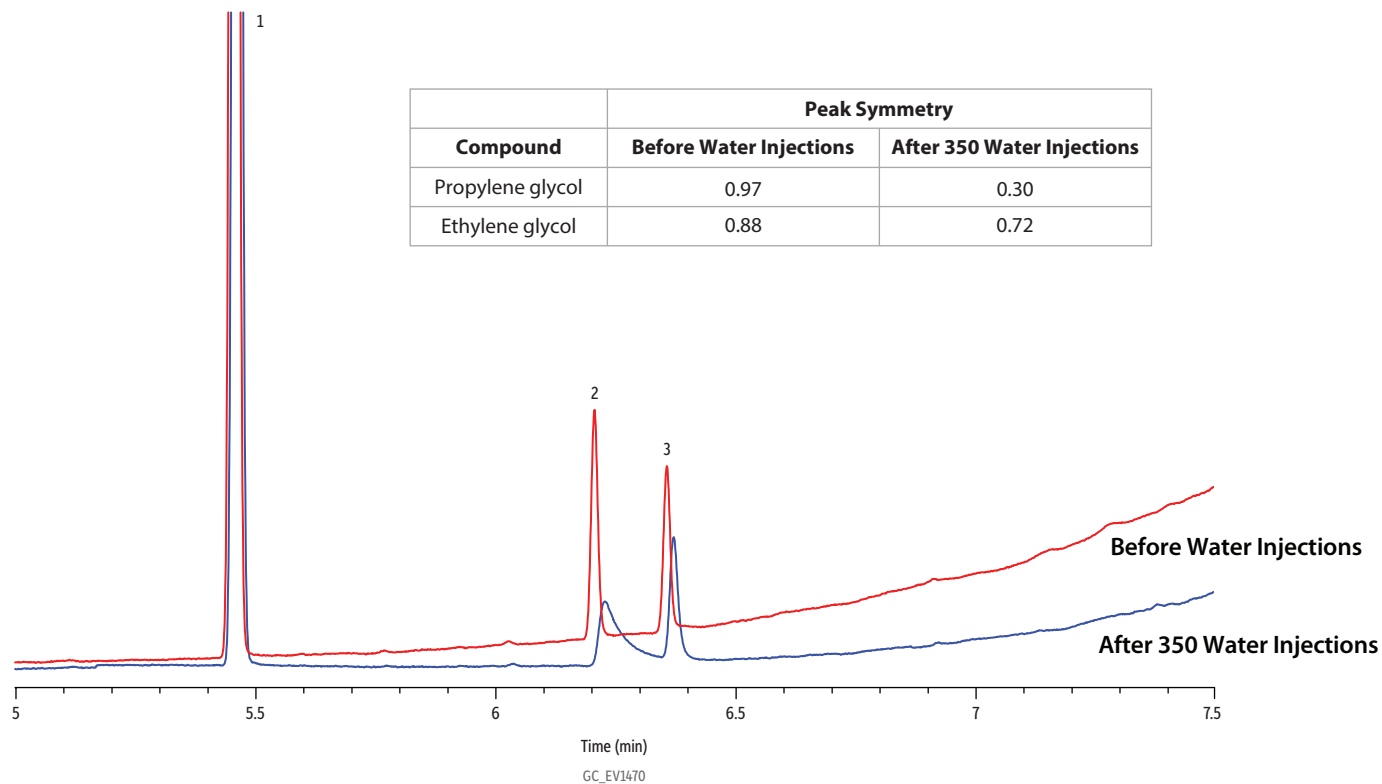


# Comparison of Glycols Before and After 350 Water Injections on Stabilwax



Peaks	tr (min)
1. 2-Butoxyethanol (IS)	5.44
2. Propylene glycol	6.21
3. Ethylene glycol	6.36

**Column** Stabilwax, 30 m, 0.53 mm ID, 1.00 µm (cat.# 10655)  
**Sample** Glycols standard (cat.# 30471)  
**Diluent:** 2-Butoxyethanol  
**Conc.:** Water:methanol (90:10)  
**Injection** 50 µg/mL (1 ng on-column)  
**Inj. Vol.:** 1 µL split (split ratio 50:1)  
**Liner:** Premium 4.0 mm Precision inlet liner w/wool (cat.# 23305)  
**Inj. Temp.:** 250 °C  
**Oven**  
**Oven Temp.:** 40 °C (hold 1 min) to 250 °C at 30 °C/min  
**Carrier Gas** He, constant linear velocity  
**Linear Velocity:** 40 cm/sec  
**Detector** FID @ 250 °C  
**Make-up Gas Flow Rate:** 45 mL/min  
**Make-up Gas Type:** N<sub>2</sub>  
**Hydrogen flow:** 40 mL/min  
**Air flow:** 450 mL/min  
**Data Rate:** 20 Hz  
**Instrument** Agilent/HP6890 GC