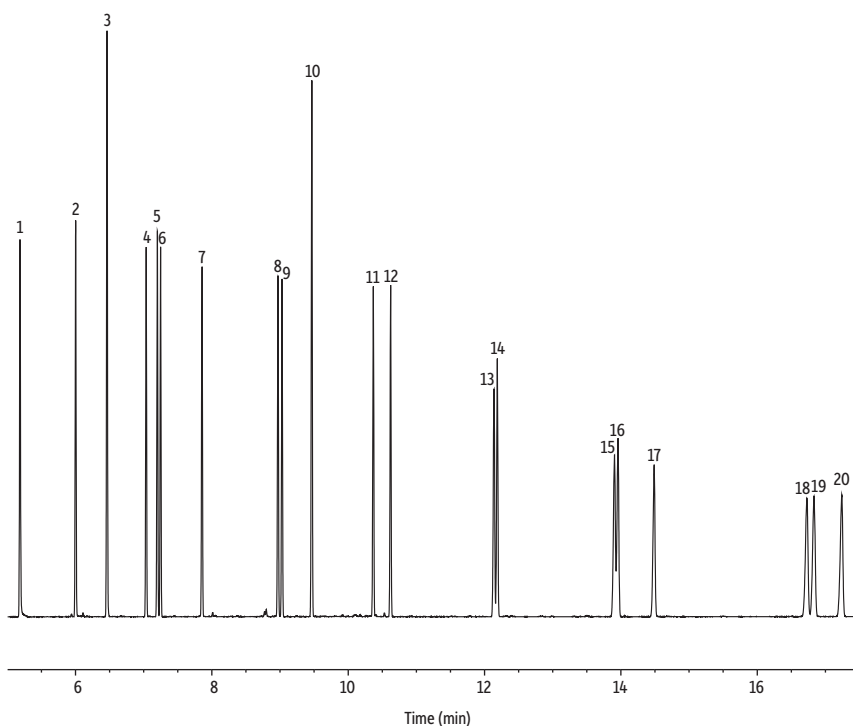


# MA DEP EPH Aromatics on Rxi-5Sil MS

• Fast analysis time.



GC\_EV1481

<b>Column</b>	Rxi-5Sil MS, 30 m, 0.32 mm ID, 0.25 µm (cat.# 13624)		
<b>Sample</b>	MA EPH aromatic hydrocarbon standard (cat.# 31458) MA fractionation surrogate spike mix (cat.# 31480) o-Terphenyl (cat.# 31097) Methylene chloride		
<b>Diluent:</b>			
<b>Injection</b>			
Inj. Vol.:	1 µL splitless		
Liner:	Topaz 4 mm ID single taper inlet liner w/ wool (cat.# 23303)		
Inj. Temp.:	300 °C		
<b>Oven</b>			
Oven Temp.:	55 °C (hold 1.5 min) to 250 °C at 20 °C/min to 330 °C at 6 °C/min (hold 2.0 min)		
<b>Carrier Gas</b>	He, constant flow		
Flow Rate:	5 mL/min		
<b>Detector</b>	FID @ 340 °C		
<b>Make-up Gas</b>			
Flow Rate:	45 mL/min		
<b>Make-up Gas</b>			
Type:	H <sub>2</sub>		
Hydrogen flow:	40 mL/min		
Air flow:	450 mL/min		
Data Rate:	50 Hz		
<b>Instrument</b>	Agilent 7890A GC		
		<b>Peaks</b>	<b>Conc.</b>
		1. Naphthalene	5.18 12.5
		2. 2-Methylnaphthalene	6.00 12.5
		3. 2-Fluorobiphenyl (SS)	6.46 20.0
		4. Acenaphthylene	7.03 12.5
		5. 2-Bromonaphthalene (SS)	7.20 20.0
		6. Acenaphthene	7.24 12.5
		7. Fluorene	7.85 12.5
		8. Phenanthrene	8.97 12.5
		9. Anthracene	9.03 12.5
		10. o-Terphenyl (SS)	9.46 20.0
		11. Fluoranthene	10.36 12.5
		12. Pyrene	10.62 12.5
		13. Benz[a]anthracene	12.13 12.5
		14. Chrysene	12.18 12.5
		15. Benzo[b]fluoranthene	13.90 12.5
		16. Benzo[k]fluoranthene	13.95 12.5
		17. Benzo[a]pyrene	14.48 12.5
		18. Indeno[1,2,3-cd]pyrene	16.72 12.5
		19. Dibenzo[a,h]anthracene	16.83 12.5
		20. Benzo[ghi]perylene	17.24 12.5