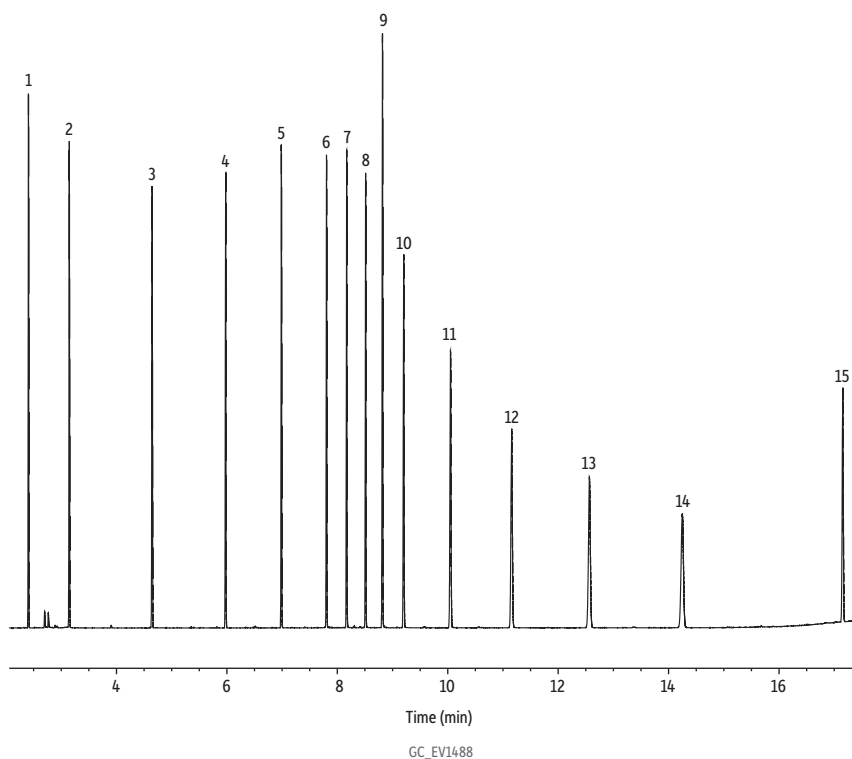


MA DEP EPH Aliphatics on Rxi-5Sil MS by Split Injection

- Fast analysis time.
- Split injection.



Column Rxi-5Sil MS, 30 m, 0.25 mm ID, 0.25 μ m (cat.# 13623)
Sample MA EPH aliphatic hydrocarbon standard (cat.# 31459)
 1-Chlorooctadecane (cat.# 31098)
Diluent: Hexane
Injection
 Inj. Vol.: 1 μ L split (split ratio 10:1)
 Liner: Topaz 4 mm ID Precision inlet liner w/ wool (cat.# 23305)
 Inj. Temp.: 300 °C
Oven
 Oven Temp.: 55 °C (hold 0.5 min) to 150 °C at 20 °C/min to 250 °C at 30 °C/min to 280 °C at 5 °C/min to 345 °C at 30 °C/min (hold 3 min)
Carrier Gas
 Flow Rate: He, constant flow
 4 mL/min
Detector
 FID @ 340 °C
Make-up Gas
 Flow Rate: 45 mL/min
Make-up Gas
 Type: N₂
 Hydrogen flow: 40 mL/min
 Air flow: 450 mL/min
 Data Rate: 50 Hz
Instrument Agilent 7890A GC

Peaks	Conc. (µg/mL)
1. <i>n</i> -Nonane	2.40
2. <i>n</i> -Decane	3.14
3. <i>n</i> -Dodecane	4.64
4. <i>n</i> -Tetradecane	5.97
5. <i>n</i> -Hexadecane	6.98
6. <i>n</i> -Octadecane	7.80
7. <i>n</i> -Nonadecane	8.17
8. <i>n</i> -Eicosane	8.51
9. 1-Chlorooctadecane (SS)	8.81
10. <i>n</i> -Docosane	9.20
11. <i>n</i> -Tetracosane	10.05
12. <i>n</i> -Hexacosane	11.15
13. <i>n</i> -Octacosane	12.56
14. <i>n</i> -Triacotane	14.24
15. <i>n</i> -Hexatriacontane	17.15