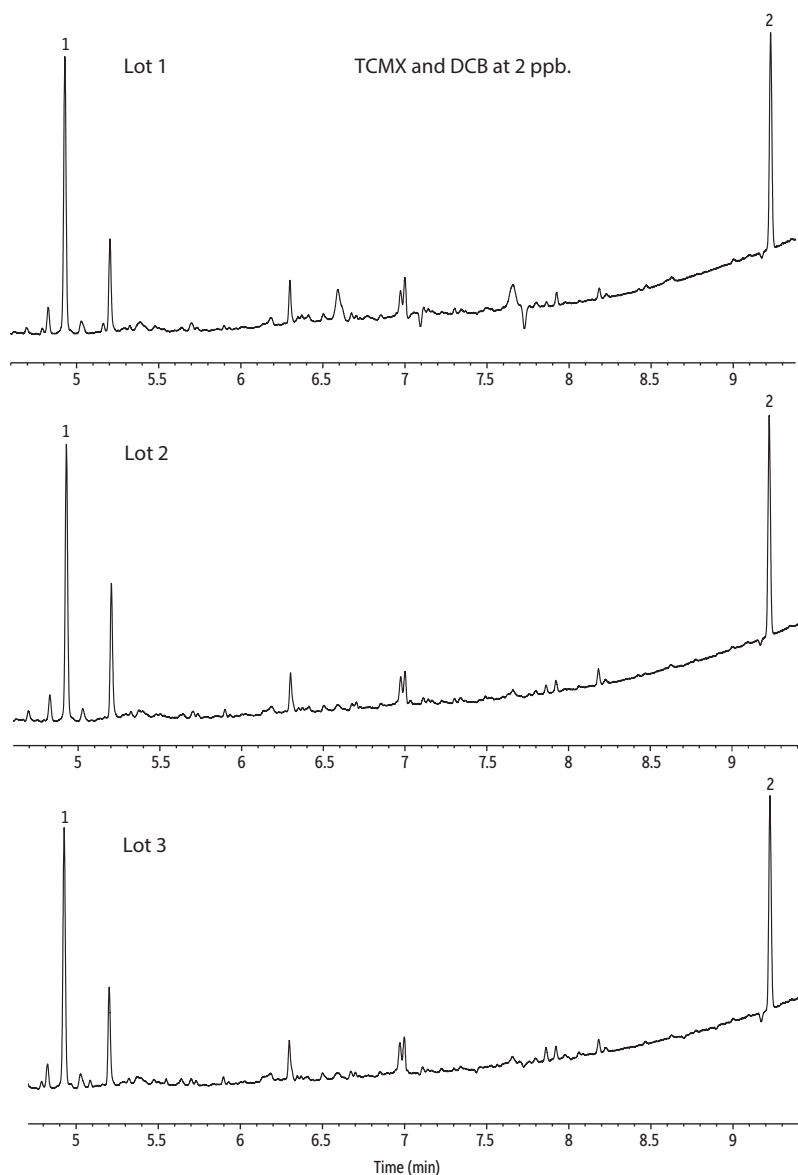


## Resprep CarboPrep Plus SPE Cartridge (Lot Comparisons)



GC\_EV1493\_1495

### Peaks

1. 2,4,5,6-Tetrachloro-*m*-xylene (TCMX)
2. Decachlorobiphenyl (DCB)

<b>Column</b>	Rtx-CL.Pesticides, 30 m, 0.32 mm ID, 0.32 $\mu$ m (cat.# 11141)
<b>Standard/Sample</b>	2,4,5,6-Tetrachloro- <i>m</i> -xylene (cat.# 32027) Decachlorobiphenyl (BZ #209) (cat.# 32029)
<b>Diluent:</b>	Hexane
<b>Conc.:</b>	2 ppb
<b>Injection</b>	
<b>Inj. Vol.:</b>	4 $\mu$ L splitless (hold 0.75 min)
<b>Liner:</b>	Topaz 4.0 mm ID single taper inlet liner w/wool (cat.# 23303)
<b>Inj. Temp.:</b>	250 °C
<b>Purge Flow:</b>	50 mL/min
<b>Oven</b>	
<b>Oven Temp.:</b>	90 °C (hold 0.5 min) to 330 °C at 25 °C/min (hold 2 min)
<b>Carrier Gas</b>	He, constant flow
<b>Flow Rate:</b>	3.5 mL/min
<b>Detector</b>	Micro-ECD @ 340 °C
<b>Make-up Gas Flow Rate:</b>	50 mL/min
<b>Make-up Gas Type:</b>	N <sub>2</sub>
<b>Data Rate:</b>	50 Hz
<b>Instrument</b>	Agilent/HP6890 GC
<b>Sample Preparation</b>	Conditioned a Resprep CarboPrep Plus SPE cartridge (cat.# 25845) by adding one cartridge volume of hexane:acetone (90:10) and letting it stand for five minutes before drawing the solvent down to frit level. Then, 1 mL of sample extract was loaded onto the cartridge and eluted with 9 mL of hexane:acetone (90:10).