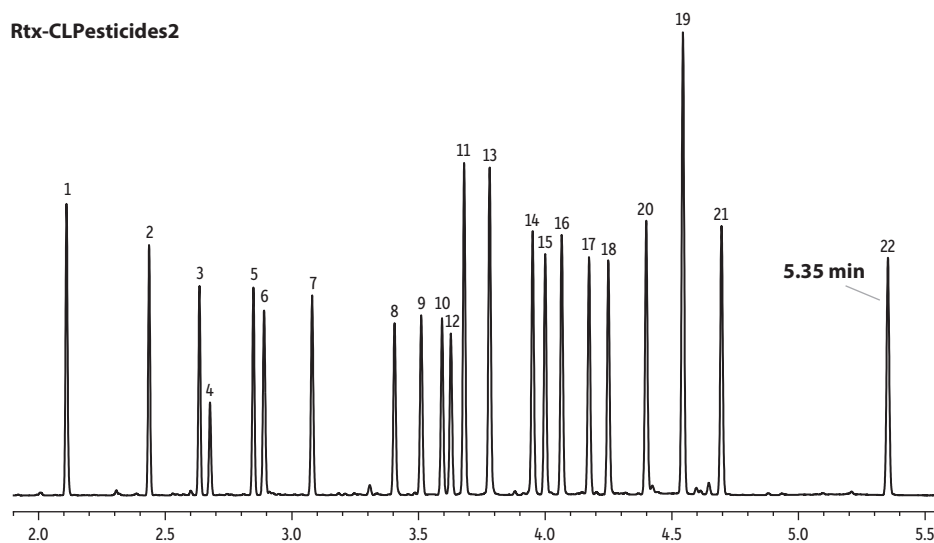
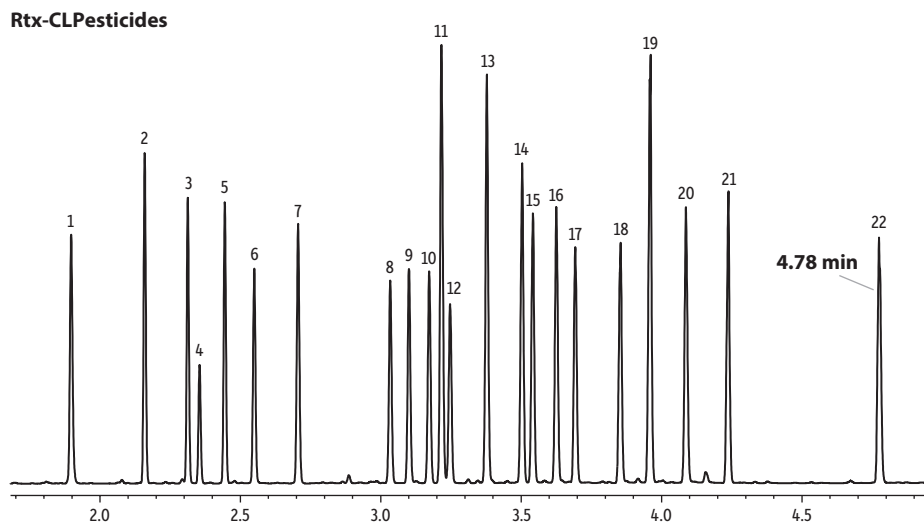


Fast Dual Column Analysis of Organochlorine Pesticides (EPA Method 8081) Using a GC Accelerator Kit and Rtx-CLPesticides and Rtx-CLPesticides2 Column Set



Time (min)
GC_EV1496

Peaks	Conc. (ng/mL)
1. Tetrachloro- <i>m</i> -xylene	25
2. α -BHC	25
3. γ -BHC	25
4. β -BHC	25
5. δ -BHC	25
6. Heptachlor	25
7. Aldrin	25
8. Heptachlor epoxide	25
9. <i>trans</i> -Chlordane	25
10. <i>cis</i> -Chlordane	25
11. 4,4'-DDE	50

Peaks	Conc. (ng/mL)
12. Endosulfan I	50
13. Dieldrin	50
14. Endrin	50
15. 4,4'-DDD	50
16. Endosulfan II	50
17. 4,4'-DDT	50
18. Endrin aldehyde	50
19. Methoxychlor	250
20. Endosulfan sulfate	50
21. Endrin ketone	50
22. Decachlorobiphenyl	50

Columns

Rtx-CLPesticides 30 m, 0.25 mm ID, 0.25 μ m (cat.# 11123-051) and Rtx-CLPesticides2 30 m, 0.25 mm ID, 0.20 μ m (cat.# 11323-051) using Rxi guard column 5 m, 0.25 mm ID (cat.# 10029) with universal angled "Y" Press-Tight connector (cat.# 20403-261) Organochlorine pesticide mix AB #2 (cat.# 32292) Pesticide surrogate mix (cat.# 32453) *n*-Hexane

Sample

Diluent:

Injection

Inj. Vol.:

Liner:

Inj. Temp.:

Purge Flow:

Oven

Oven Temp.:

Carrier Gas

Linear Velocity:

Detector

Make-up Gas Flow Rate:

Make-up Gas Type:

Data Rate:

Instrument

Notes

2 μ L splitless (hold 0.3 min)
Topaz 4 mm ID single taper inlet liner w/wool (cat.# 23303)
250 °C
40 mL/min
120 °C (hold 0.3 min) to 200 °C at 60 °C/min to 230 °C at 25 °C/min to 320 °C at 35 °C/min (hold 1.5 min)
H₂, constant flow
100 cm/sec
Micro-ECD @ 330 °C
60 mL/min
N₂
50 Hz
Agilent 7890A GC
A GC Accelerator oven insert kit (cat.# 23849) was installed in the instrument to speed up analysis. The analytical columns were custom products that were not on cages.