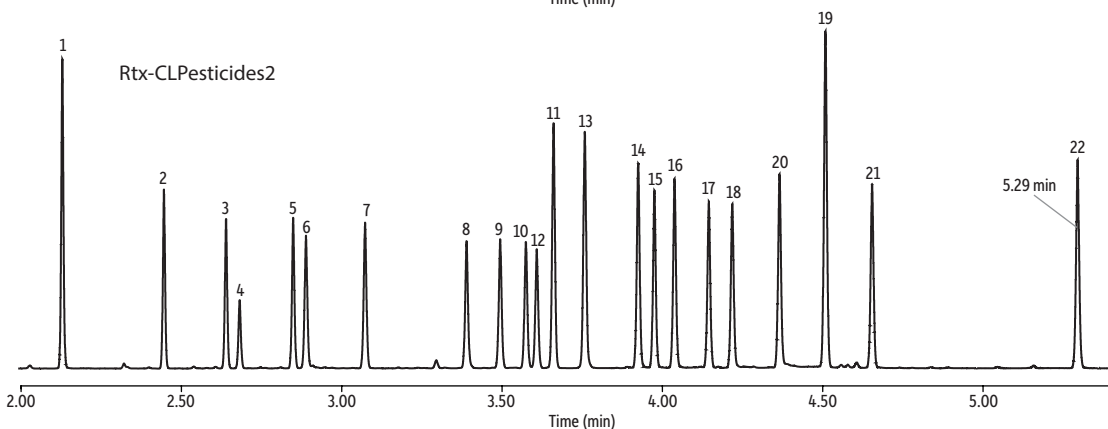
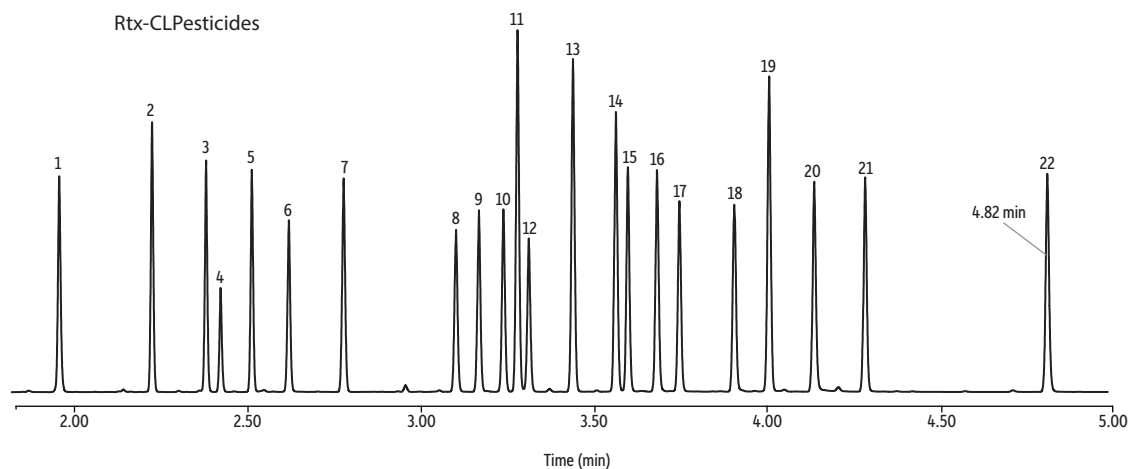


# Fast Dual Column Analysis of Organochlorine Pesticides (EPA Method 8081) Using a GC Accelerator Kit and Rtx-CLPesticides and Rtx-CLPesticides2 Column Set

- GC Accelerator kit decreases cycle time to nearly 10 minutes.
- Increased sample throughput.



GC\_EV1498

Peaks	Conc. (ng/mL)
1. Tetrachloro- <i>m</i> -xylene	25
2. $\alpha$ -BHC	25
3. $\gamma$ -BHC	25
4. $\beta$ -BHC	25
5. $\delta$ -BHC	25
6. Heptachlor	25
7. Aldrin	25
8. Heptachlor epoxide	25
9. <i>trans</i> -Chlordane	25
10. <i>cis</i> -Chlordane	25
11. 4,4'-DDE	50
12. Endosulfan I	50
13. Dieldrin	50
14. Endrin	50
15. 4,4'-DDD	50
16. Endosulfan II	50
17. 4,4'-DDT	50
18. Endrin aldehyde	50
19. Methoxychlor	250
20. Endosulfan sulfate	50
21. Endrin ketone	50
22. Decachlorobiphenyl	50

## Columns

Rtx-CLPesticides 30 m, 0.32 mm ID, 0.32  $\mu$ m (cat.# 11141-051) and Rtx-CLPesticides2 30 m, 0.32 mm ID, 0.25  $\mu$ m (cat.# 11324-051) using Rxi guard column 5 m, 0.32 mm ID (cat.# 10039) with universal angled "Y" Press-Tight connector (cat.# 20403-261)

## Sample

Organochlorine pesticide mix AB #2 (cat.# 32292)  
Pesticide surrogate mix (cat.# 32453)  
*n*-Hexane

## Diluent:

## Injection

Inj. Vol.: 2  $\mu$ L splitless (hold 0.3 min)  
Liner: Topaz 4.0 mm ID single taper inlet liner w/wool (cat.# 23303)  
Inj. Temp.: 250 °C  
Purge Flow: 40 mL/min

## Oven

Oven Temp.: 120 °C (hold 0.3 min) to 200 °C at 60 °C/min to 230 °C at 25 °C/min to 320 °C at 35 °C/min (hold 1.5 min)

## Carrier Gas

Linear Velocity: H<sub>2</sub>, constant flow  
90 cm/sec

## Detector

Make-up Gas: Micro-ECD @ 330 °C

## Flow Rate:

60 mL/min

## Make-up Gas Type:

N<sub>2</sub>

## Data Rate:

50 Hz

## Instrument

Agilent 7890A GC

## Notes

A GC Accelerator oven insert kit (cat.# 23849) was installed in the instrument to speed up analysis. The analytical columns were custom products that were not on cages. This customized format can be obtained from Restek simply by ordering the standard column catalog number and specifying "-051" under special instructions.