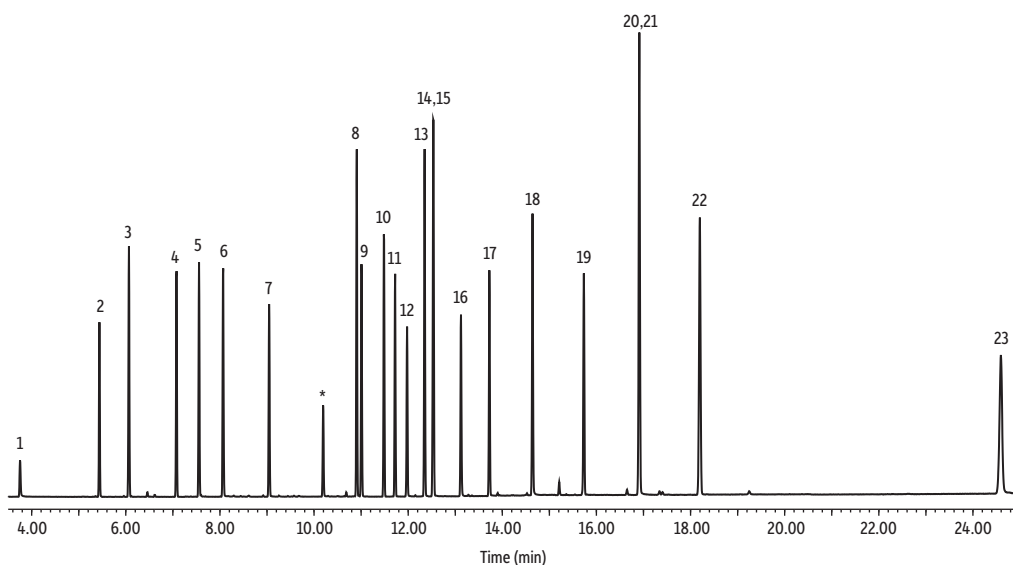


Semivolatiles SVOC Additions Standard on Rxi-SVOCms



GC_EV1506

Peaks	tr (min)	Conc. (µg/mL)	Quantifier Ion	Qualifier Ion
1. Acrylamide	3.767	200	71	55
2. Decane	5.443	200	57	71
3. Indene	6.07	200	115	116
4. O,O,O-Triethyl phosphorothioate	7.08	200	198	121
5. a-Terpineol	7.56	200	93	136
6. Quinoline	8.071	200	129	102
7. 2,3-Dichloroaniline	9.05	200	161	163
8. Hexadecane	10.91	200	71	85
9. Zinophos	11.01	200	143	97
10. Sulfotep	11.49	200	322.2	202
11. Phorate	11.73	200	75	121
12. Dimethoate	11.98	200	87	125
13. Octadecane	12.35	200	71	85
14. Disulfoton	12.53	200	88	97
15. Dinoseb	12.54	200	211	163
16. Methyl parathion	13.13	200	263	109
17. Ethyl parathion	13.73	200	291	97
18. Benzidine	14.65	200	184	185
19. Famphur	15.74	200	218	125
20. 3,3'-Dichlorobenzidine	16.92	200	252	254
21. 4,4'-Methylenebis(2-chloroaniline)	16.92	200	266	231
22. 6-Methylchrysene	18.21	200	242.2	241
23. Dibenz(a,h)acridine	24.62	200	279.1	139

Column Standard/Sample Rxi-SVOCms, 30 m, 0.25 mm ID, 0.50 µm (cat.# 16638)
SVOC Additions standard (cat.# 31909)
Diluent: Dichloromethane
Conc.: 200 µg/mL (2 ng on-column)
Injection
Inj. Vol.: 1 µL split (split ratio 100:1)
Liner: Topaz 4.0 mm ID single taper inlet liner w/ wool (cat.# 23303)
Inj. Temp.: 250 °C
Oven
Oven Temp.: 60 °C (hold 1 min) to 285 °C at 16 °C/min to 305 °C at 1.65 °C/min to 330 °C at 8.8 °C/min (hold 4.55 min)
Carrier Gas
Flow Rate: He, constant flow
1.2 mL/min
Detector
Mode: MS
Scan
Scan Program:

Group	Start Time (min)	Scan Range (amu)	Scan Rate (scans/sec)
1	2.0	50-500	3.6

Transfer Line Temp.: 280 °C
Analyzer Type: Quadrupole
Source Type: Inert
Drawout Plate: 6 mm ID
Source Temp.: 330 °C
Quad Temp.: 180 °C
Electron Energy: 70 eV
Solvent Delay Time: 2 min
Tune Type: DFTPP
Ionization Mode: EI
Instrument
Agilent 7890A GC & 5975C MSD
Sample Preparation
Standard was diluted to a concentration of 200 ppm with dichloromethane in amber 2 mL, 9 mm short-cap, screw-thread vials (cat.# 21143) containing glass Big Mouth inserts (cat.# 21782) and sealed with 2.0 mL, 9 mm short-cap, screw-vial closures (cat.# 23842).
Notes
* Denotes p-tert-butylcatechol (preservative)
Acknowledgement
Chris Rattray