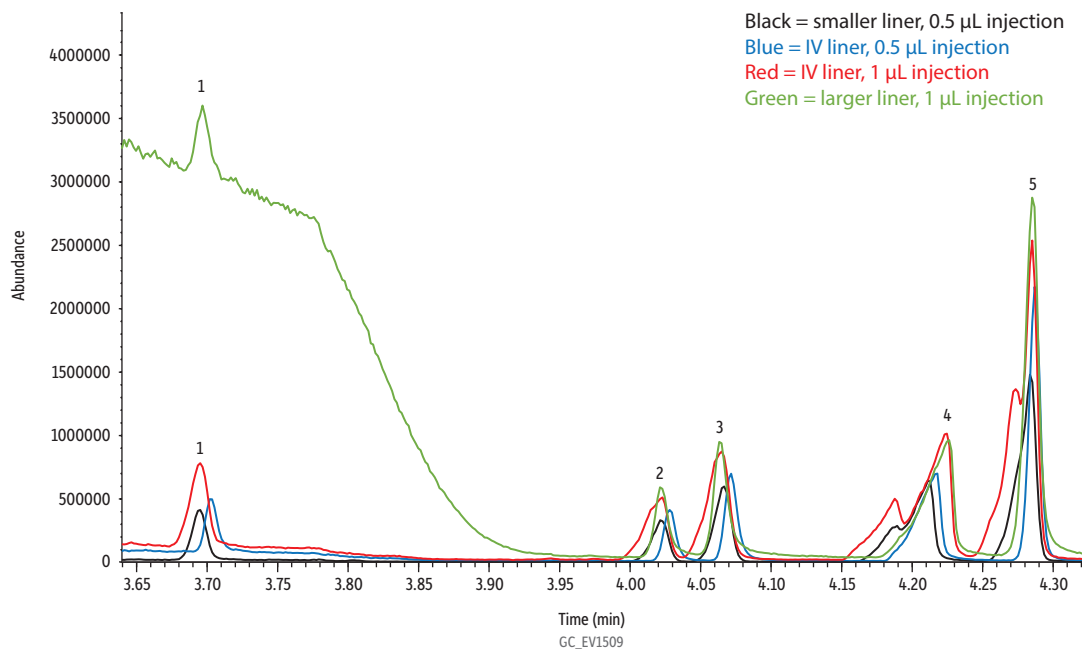


## Comparison: Semivolatiles on Narrow-Bore Rxi-SVOCms - IV Liner Article Figure 3



Peaks	tr (min)	Conc. (µg/mL)
1. Isophorone	3.696	1
2. 1,3-Dimethyl-2-nitrobenzene	4.02	1
3. Naphthalene	4.067	1
4. Methamidophos	4.223	1
5. Dichlorvos	4.286	1

**Column** Rxi-SVOCms GC capillary column, 20 m, 0.15 mm ID, 0.15 µm (cat.# 46616)  
**Standard/Sample** Method 525.2 semivolatile mix (revised), acetone, 1 mL/ampul (cat.# 31899)  
 Method 525.2 internal standard mix, 1000 µg/mL, acetone, 1 mL/ampul (cat.# 31825)  
 Method 525.2 surrogate standard mix, 1000 µg/mL, acetone, 1 mL/ampul (cat.# 31826)  
 Organophosphorus pesticide mix, European formulation, acetone, 1 mL/ampul (cat.# 32418)  
 Acetone

**Diluent:**  
**Injection**

Inj. Vol.: 0.5-1 µL splitless (hold 3 min)  
 Liner: Three Topaz single taper, splitless inlet liners with quartz wool and premium deactivation were compared. All were 78.5 mm long with a 6.5 mm OD and the following IDs: 2.0 mm (cat.# 23316); 3.0 mm (cat.# 27231); and 4.0 mm (cat.# 23303).

Inj. Temp.: 250 °C  
 Purge Flow: 15 mL/min

**Oven**

Oven Temp.: 45 °C (hold 0.5 min) to 260 °C at 30 °C/min to 330 °C at 4 °C/min

**Carrier Gas** He, constant flow

Flow Rate: 0.84 mL/min

Linear Velocity: 40.807 cm/sec @ 45 °C

Dead Time: 0.82 min @ 45 °C

**Detector**

Mode: MS

Scan Program:

Group	Start Time (min)	Scan Range (amu)	Scan Rate (scans/sec)
1	1.5	50-550	9.9

Transfer Line Temp.: 250 °C

Analyzer Type: Quadrupole

Source Type: Extractor

Source Temp.: 230 °C

Quad Temp.: 150 °C

Electron Energy: 929 eV

Solvent Delay Time: 1.5 min

Tune Type: PFTBA

Ionization Mode: EI

**Instrument** Agilent 7890A GC & 5975C MSD

**Sample Preparation** 2 µL of cat.# 31899, 31825, 31826 and 20 µL of cat.# 32418 were added to 1974 µL of acetone. Splitless injections were performed with a 10 µL SGE autosampler syringe (cat.# 24795).