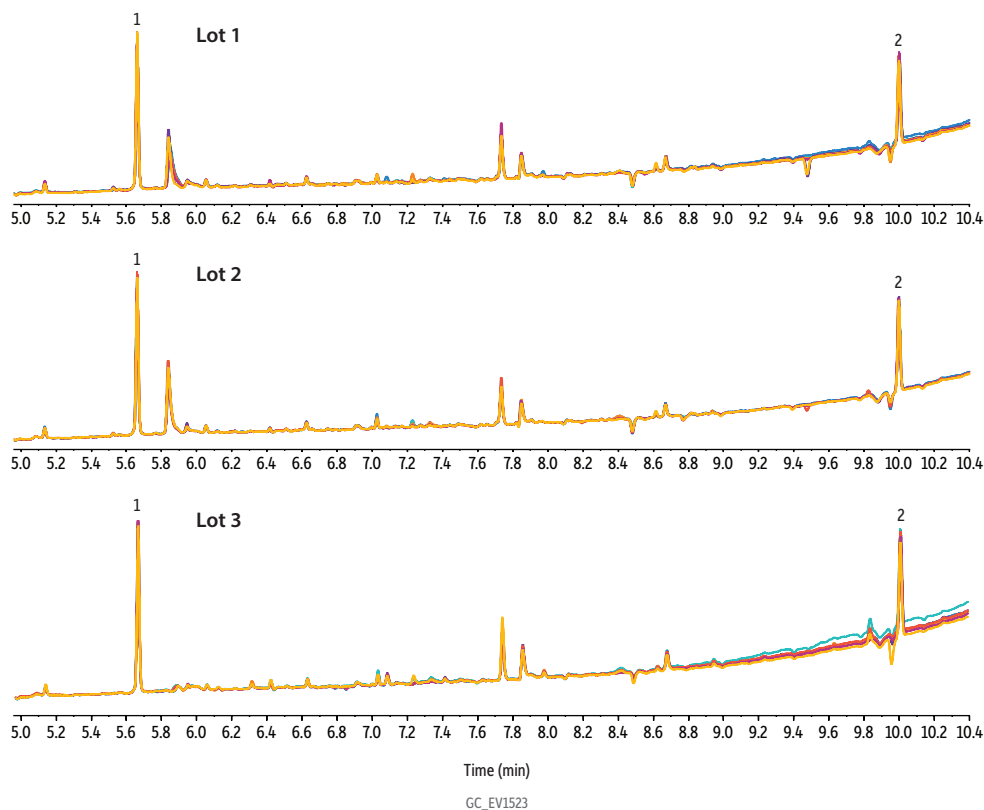


Chromtographic Background of Resprep FL + CarboPrep Plus SPE Cartridges



Peaks	tr (min)
1. 2,4,5,6-Tetrachloro- <i>m</i> -xylene	5.65
2. Biphenyl, decachloro-	10.00

Column	Rtx-CLPesticides, 30 m, 0.32 mm ID, 0.32 µm (cat.# 11141)
Standard/Sample	2,4,5,6-Tetrachloro- <i>meta</i> -xylene (cat.# 32027) Decachlorobiphenyl (BZ #209) (cat.# 32029)
Diluent:	Hexane
Conc.:	5 ng/µL
Injection	
Inj. Vol.:	4 µL pulsed splitless
Liner:	Topaz single taper inlet liner w/wool (cat.# 23303)
Inj. Temp.:	250 °C
Pulse Pressure:	35 psi (241.3kPa)
Pulse Time:	0.74 min
Purge Flow:	50 mL/min
Oven	
Oven Temp.:	70 °C (hold 0.5 min) to 320 °C at 25 °C/min (hold 2 min)
Carrier Gas	He, constant flow
Flow Rate:	3.5 mL/min
Detector	Micro-ECD @ 330 °C
Make-up Gas Flow Rate:	60 mL/min
Make-up Gas Type:	N <sub>2</sub>
Data Rate:	50 Hz
Instrument	Agilent 7890B GC
Sample Preparation	Conditioned a Resprep FL + CarboPrep Plus SPE cartridge (cat.# 28899) by adding one cartridge volume of hexane:acetone (90:10) and letting it stand for five minutes before drawing the solvent down to frit level. Then, 1 mL of sample extract was loaded onto the cartridge and eluted with 9 mL of hexane:acetone (90:10).