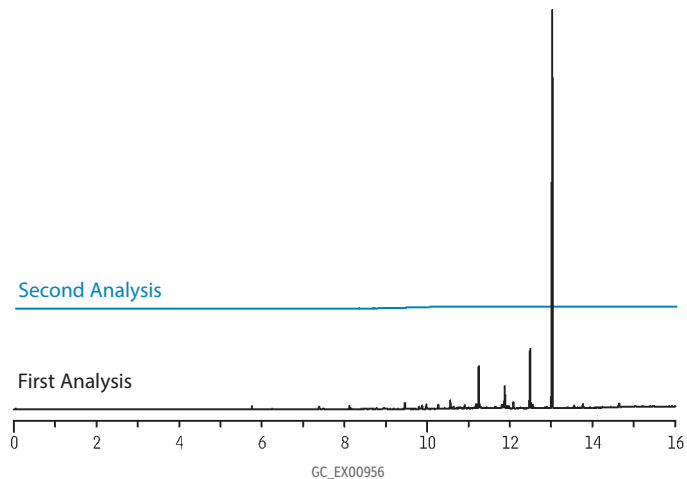


## Comparison of Contamination before and after Conditioning after Inlet Maintenance



<b>Column</b>	Rxi-5ms, 30 m, 0.32 mm ID, 0.25 $\mu$ m (cat.# 13424)
<b>Sample</b>	No sample injected; instrument ran the method conditions with no injection.
<b>Injection</b>	splitless (hold 0.5 min)
<b>Liner:</b>	4 mm ID straight inlet liner w/wool, IP deactivated (cat.# 20782)
<b>Inj. Temp.:</b>	250 °C
<b>Purge Flow:</b>	40 mL/min
<b>Oven</b>	
<b>Oven Temp.:</b>	50 °C (hold 5 min) to 320 °C at 30 °C/min (hold 10 min)
<b>Carrier Gas</b>	He, constant flow
<b>Flow Rate:</b>	5.0 mL/min
<b>Detector</b>	FID @ 330 °C