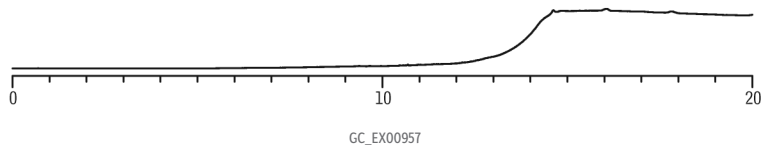


Conditioning column above method temperature removes contaminants



Column	Rxi-5ms, 30 m, 0.32 mm ID, 0.25 μ m (cat.# 13424)
Sample	No sample injected; instrument ran the method conditions with no injection.
Injection	splitless (hold 0.5 min)
Liner:	4 mm ID straight inlet liner w/wool, IP deactivated (cat.# 20782)
Inj. Temp.:	250 °C
Purge Flow:	40 mL/min
Oven	
Oven Temp.:	50 °C (hold 5 min) to 320 °C at 30 °C/min (hold 10 min)
Carrier Gas	He, constant flow
Flow Rate:	5.0 mL/min
Detector	FID @ 330 °C
Notes	System was conditioned for 10 min at the following temperatures: inlet 300 °C, oven 310 °C, detector 330 °C.