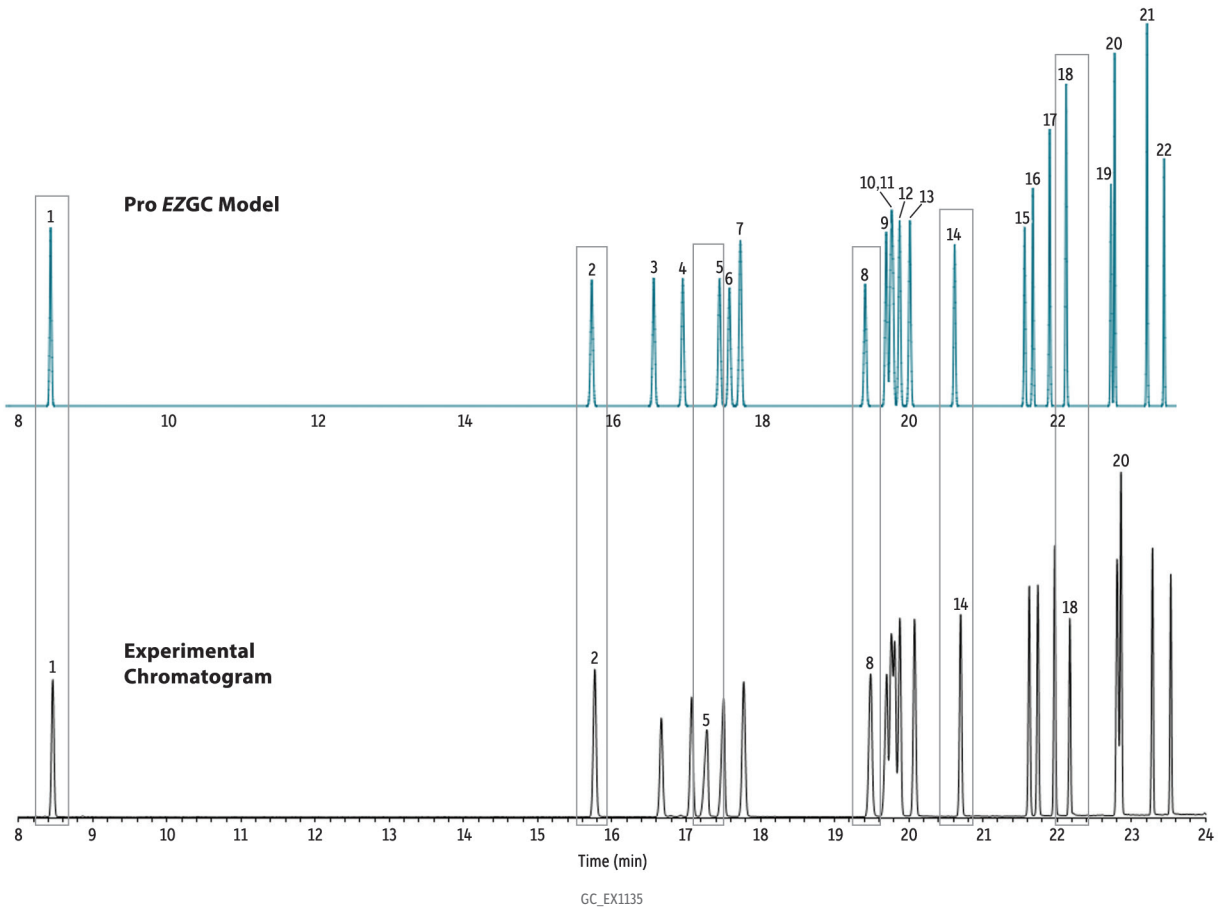


Pro EZGC Modeling of Minnesota Dept. of Ag. List 1 Pesticides on Rtx-440



Peaks	t <sub>r</sub> (min)	Conc. (µg/mL)
1. EPTC	8.462	100
2. Propachlor	15.768	100
3. Ethalfluralin	16.665	100
4. Trifluralin	17.074	100
5. Desisopropyl-atrazine	17.278	100
6. Desethyl-atrazine	17.503	100
7. Phorate	17.776	100
8. Prometon	19.485	100
9. Simazine	19.702	100
10. Terbufos	19.767	100
11. Atrazine	19.810	100
12. Propazine	19.880	100
13. Fonofos	20.079	100
14. Triallate	20.700	100
15. Dimethenamid	21.624	100
16. Acetochlor	21.741	100
17. Alachlor	21.968	100
18. Metribuzin	22.172	100
19. Metolachlor	22.810	100
20. Chlorpyrifos	22.861	100
21. Cyanazine	23.286	100
22. Pendimethalin	23.532	100

**Column** Rtx-440, 30 m, 0.25 mm ID, 0.25 µm (cat.# 12923)  
**Sample** Minnesota Ag List 1 pesticide kit (cat.# 32408)  
**Diluent:** Acetone  
**Conc.:** 100 ppm  
**Injection**  
**Inj. Vol.:** 1 µL split (split ratio 25:1)  
**Liner:** Premium 4 mm Precision liner w/wool (cat.# 23305.1)  
**Inj. Temp.:** 300 °C  
**Oven**  
**Oven Temp.:** 100 °C (hold 0.5 min) to 175 °C at 4 °C/min to 250 °C at 14.5 °C/min  
**Carrier Gas** He, constant flow  
**Flow Rate:** 2.0 mL/min  
**Detector** MS  
**Mode:** Scan  
**Scan Program:**

Group	Start Time (min)	Scan Range (amu)	Scan Rate (scans/sec)
1	1.6	40-350	5

**Transfer Line**  
**Temp.:** 300 °C  
**Analyzer Type:** Quadrupole  
**Source Type:** Inert  
**Drawout Plate:** 6 mm ID  
**Source Temp.:** 250 °C  
**Quad Temp.:** 180 °C  
**Electron Energy:** 70 eV  
**Solvent Delay**  
**Time:** 1.6 min  
**Tune Type:** PFTBA  
**Ionization Mode:** EI  
**Instrument** Agilent 7890A GC & 5975C MSD