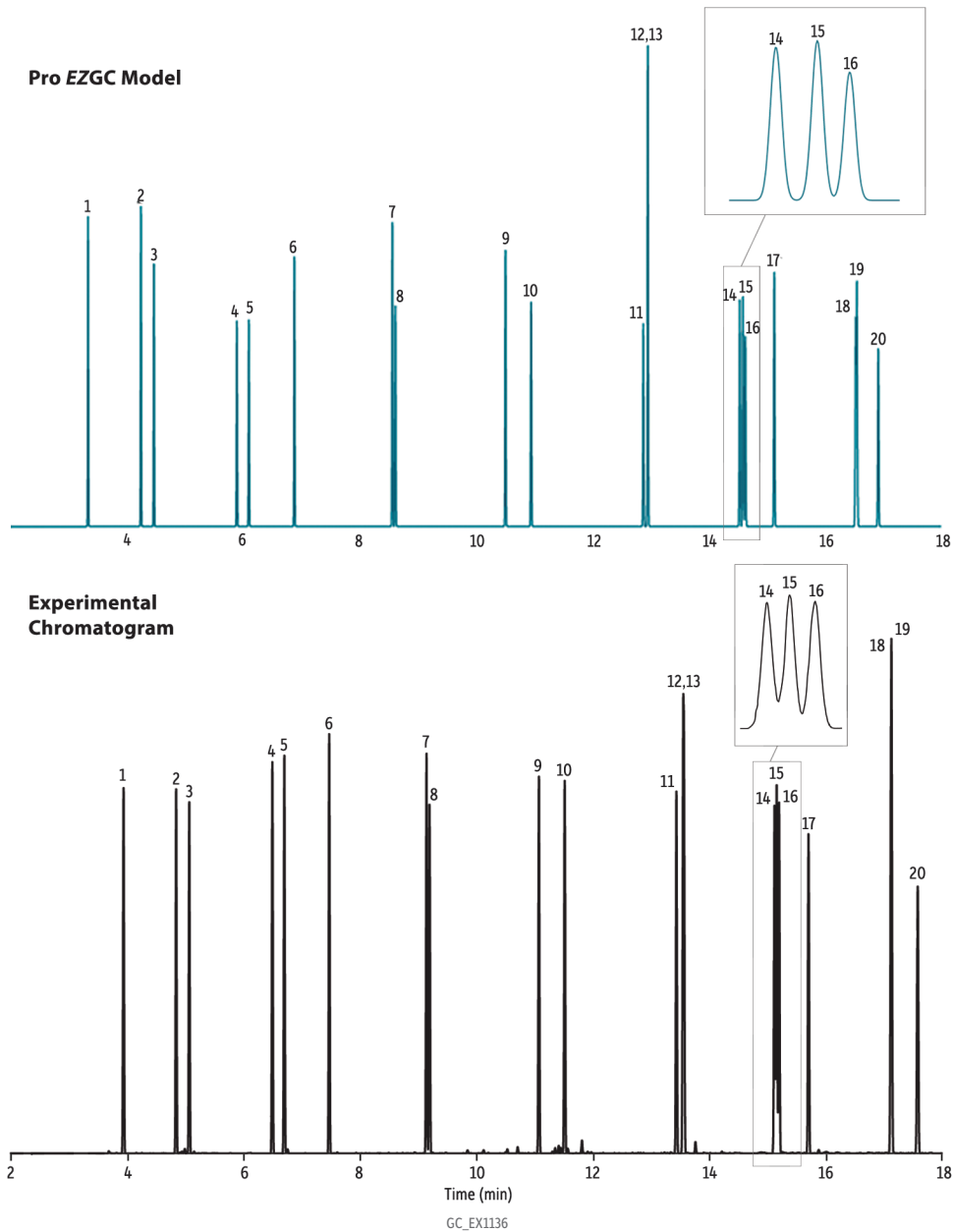


Polycyclic Aromatic Hydrocarbons on Rxi-17Sil MS (Model vs. Experimental)



- Peaks**
1. Naphthalene
 2. 2-Methylnaphthalene
 3. 1-Methylnaphthalene
 4. Acenaphthylene
 5. Acenaphthene
 6. Fluorene
 7. Phenanthrene
 8. Anthracene
 9. Fluoranthene
 10. Pyrene
 11. Benzo[a]anthracene
 12. Chrysene
 13. Triphenylene
 14. Benzo[b]fluoranthene
 15. Benzo[k]fluoranthene
 16. Benzo[j]fluoranthene
 17. Benzo[a]pyrene
 18. Indeno[1,2,3-cd]pyrene
 19. Dibenzo[a,h]anthracene
 20. Benzo[ghi]perylene

Column Rxi-17Sil MS, 15 m, 0.25 mm ID, 0.25 μ m (cat.# 14120)

Sample

Diluent: Methylene chloride

Conc.: 20 ng/ μ L

Injection

Inj. Vol.: 1 μ L split (split ratio 20:1)

Liner: 4 mm split Precision liner w/wool (cat.# 21022)

Inj. Temp.: 275 $^{\circ}$ C

Split Vent

Flow Rate: 42 mL/min

Oven

Oven Temp.: 80 $^{\circ}$ C (hold 1 min) to 320 $^{\circ}$ C at 15 $^{\circ}$ C/min (hold 2 min)

Carrier Gas Hz, constant flow

Flow Rate: 2 mL/min

Detector FID @ 340 $^{\circ}$ C

Constant Column +
Constant Make-up: 50 mL/min

Make-up

Gas Type: N₂

Data Rate: 20 Hz

Instrument Agilent/HP6890 GC