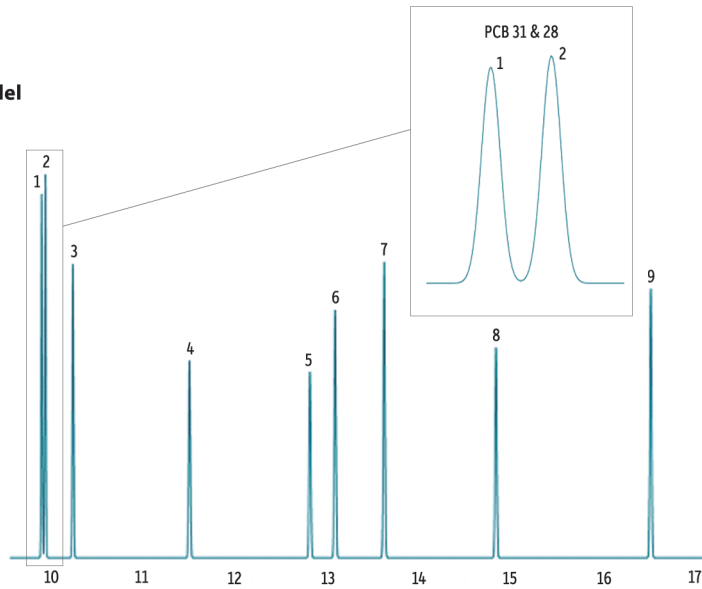
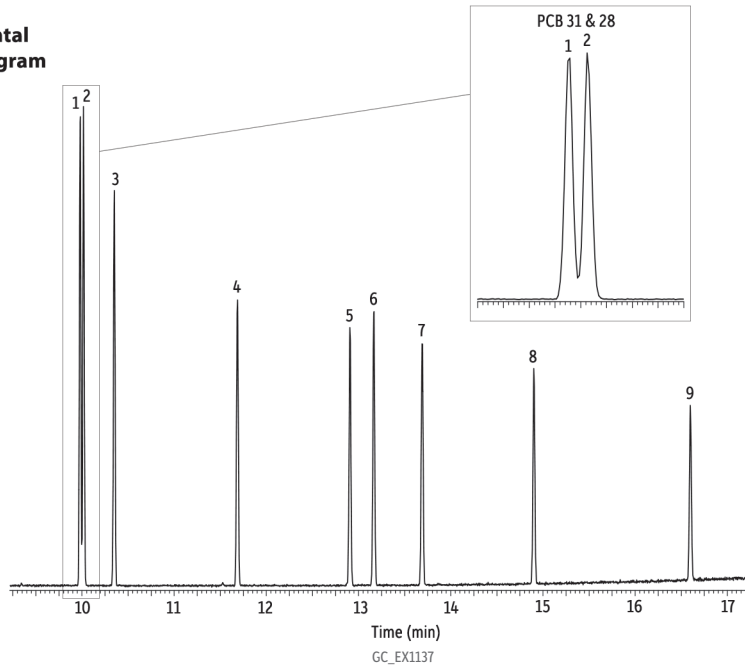


EU PCB Congeners on Rxi-XLB (Model vs. Experimental)

Pro EZGC Model



Experimental Chromatogram



- Peaks**
1. PCB 31
 2. PCB 28
 3. PCB 52
 4. PCB 101
 5. PCB 118
 6. PCB 153
 7. PCB 138
 8. PCB 180
 9. PCB 194

Column Rxi-XLB, 30 m, 0.25 mm ID, 0.25 μ m (cat.# 13723)
Sample PCB congener standard #2 (cat.# 32294)
 PCB 31 (cat.# custom)
Diluent: Dichloromethane
Conc.: 3.5 ppm
Injection
Inj. Vol.: 0.5 μ L splitless (hold 1.75 min)
Liner: 2.0 mm ID straight inlet liner w/wool (cat.# 21718)
Inj. Temp.: 300 °C
Purge Flow: 50 mL/min
Oven
Oven Temp.: 40 °C (hold 2 min) to 240 °C at 30 °C/min (hold 2 min) to 340 °C at 10 °C/min (hold 5 min)
Carrier Gas He, constant flow
Flow Rate: 1 mL/min
Detector MS
Mode: Scan
Transfer Line
Temp.: 300 °C
Analyzer Type: Quadrupole
Source Temp.: 280 °C
Electron Energy: 70 eV
Ionization Mode: EI
Scan Range: 45-550 amu
Scan Rate: 5 scans/sec
Instrument PE Clarus 500 GC & Clarus 500 MS