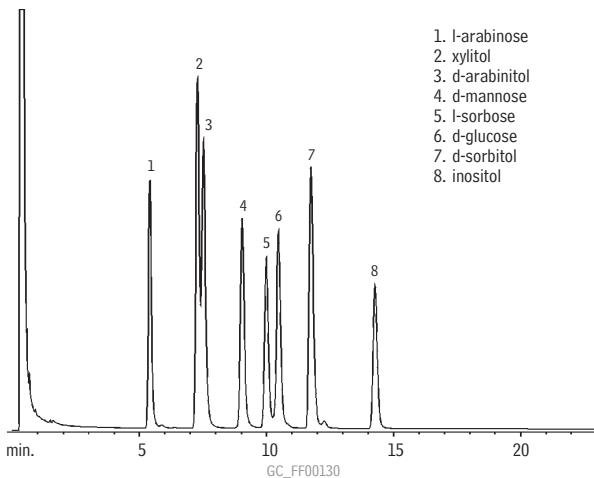


Sugar Alcohols (TMS derivatives) 3% Rt-101 on 100/120 Silcoport™



3% Rt-101 on 100/120 Silcoport™ (cat.# 80400)
2m, 1/8" OD x 2mm ID

Oven temp.: 140°C to 230°C @ 5°C/min. (hold 5 min.)
Inj./det. temp.: 250°C / 300°C
Det.: FID
Carrier gas: helium
Column flow rate: 35mL/min.
FID sensitivity: 1.28 x 10⁻¹⁰ AFS