

FAMES (Marine Oil Standard)
FAMEWAX™

30m, 0.32mm ID, 0.25µm FAMEWAX (cat. # 12498)

Inj.: 1µL

Conc.: 10,000µg/mL in isoctane (total FAMES; see breakdown in peak list)

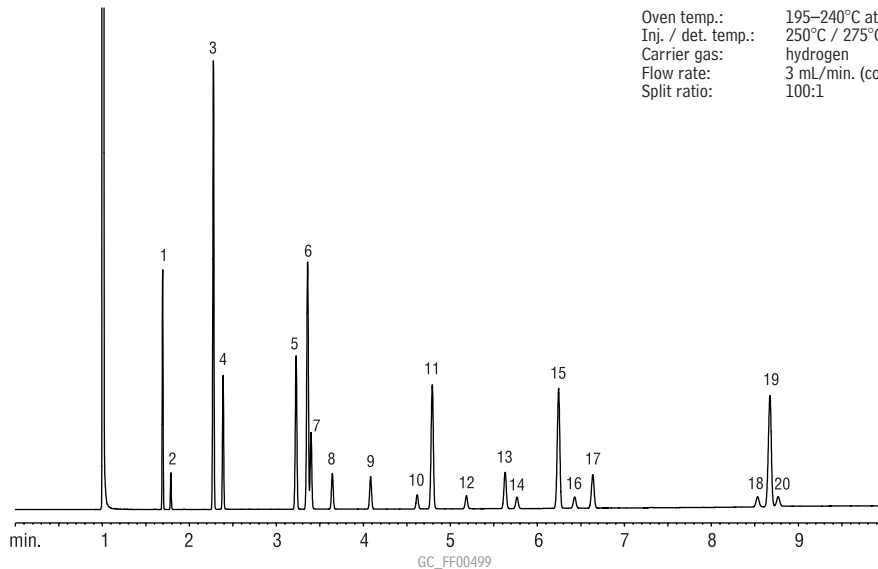
Oven temp.: 195–240°C at 5°C/min., 1 min. hold

Inj. / det. temp.: 250°C / 275°C

Carrier gas: hydrogen

Flow rate: 3 mL/min. (constant flow)

Split ratio: 100:1



Peak List	Conc. (µg/mL)
1. C14:0	600
2. C14:1	100
3. C16:0	1600
4. C16:1	500
5. C18:0	800
6. C18:1 (oleate)	1300
7. C18:1 (vaccenate)	400
8. C18:2	200
9. C18:3	200
10. C20:0	100
11. C20:1	900
12. C20:2	100
13. C20:4	300
14. C20:3	100
15. C20:5	1000
16. C22:0	100
17. C22:1	300
18. C24:0	100
19. C22:6	1200
20. C24:1	100