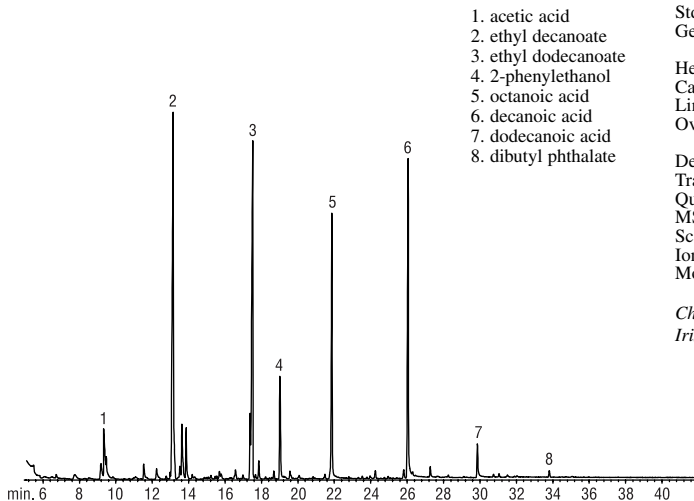


Flavor Compounds in Grappa Stabilwax®-DA



GC_FF00558

Stabilwax®-DA 30m, 0.18mm ID, 0.18µm (cat.# 550752)

Inj.: 10µL large volume injection (splitless), at 10µL/min.

Std. conc.: neat

Gerstel CIS Injector: 35°C (hold 2 min.), to 300°C @ 10°C/sec. (hold 5 min.)

Helium vent flow: 600mL/min with 1.8 min. vent end time

Carrier gas: helium

Linear velocity: 45cm/sec.

Oven temp.: 60°C (hold 2 min.) to 100°C @ 20°C/min., to 240°C @ 5°C/min. (hold 10 min.)

Det.: MSD

Transfer line temp.: 240°C

Quadrupole temp.: 150°C

MS source temp.: 230°C

Scan range: 30–400amu

Ionization: 70eV

Mode: EI

*Chromatogram courtesy of Kevin MacNamara, Ph.D.,
Irish Distilleries, Ltd.*