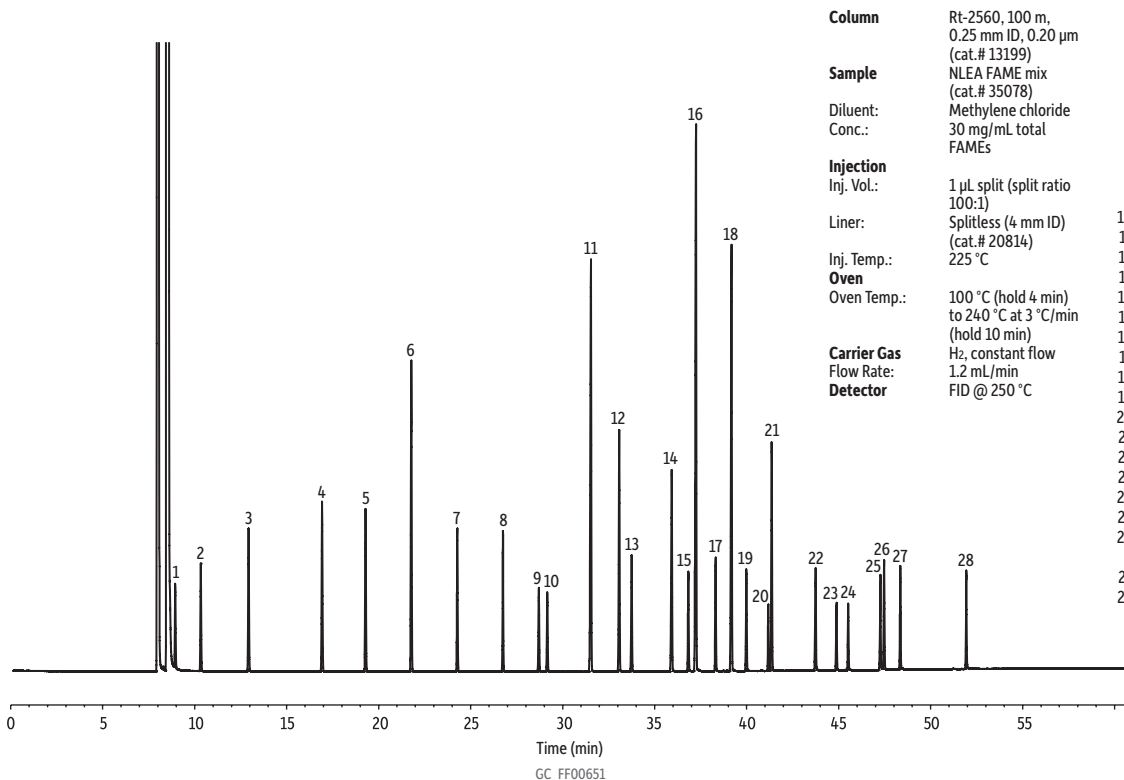


FAMES (NLEA Mix) on Rt-2560



Column Rt-2560, 100 m, 0.25 mm ID, 0.20 µm (cat.# 13199)

Sample NLEA FAME mix (cat.# 35078)

Diluent: Methylene chloride

Conc.: 30 mg/mL total FAMES

Injection

Inj. Vol.: 1 µL split (split ratio 100:1)

Liner: Splitless (4 mm ID) (cat.# 20814)

Inj. Temp.: 225 °C

Oven

Oven Temp.: 100 °C (hold 4 min) to 240 °C at 3 °C/min (hold 10 min)

Carrier Gas H₂, constant flow

Flow Rate: 1.2 mL/min

Detector FID @ 250 °C

- Peaks**
1. C4:0 Methyl butyrate
 2. C6:0 Methyl hexanoate
 3. C8:0 Methyl octanoate
 4. C10:0 Methyl decanoate
 5. C11:0 Methyl undecanoate
 6. C12:0 Methyl laurate
 7. C13:0 Methyl tridecanoate
 8. C14:0 Methyl myristate
 9. C14:1 Methyl myristoleate (*cis*-9)
 10. C15:0 Methyl pentadecanoate
 11. C16:0 Methyl palmitate
 12. C16:1 Methyl palmitoleate (*cis*-9)
 13. C17:0 Methyl heptadecanoate
 14. C18:0 Methyl stearate
 15. C18:1 Methyl elaidate (*trans*-9)
 16. C18:1 Methyl oleate (*cis*-9)
 17. C18:2 Methyl linolelaidate (*trans*-9,12)
 18. C18:2 Methyl linoleate (*cis*-9,12)
 19. C20:0 Methyl arachidate
 20. C20:1 Methyl eicosenoate (*cis*-11)
 21. C18:3 Methyl linolenate (*cis*-9,12,15)
 22. C22:0 Methyl behenate
 23. C22:1 Methyl erucate (*cis*-13)
 24. C23:0 Methyl tricosanoate
 25. C24:0 Methyl lignocerate
 26. C20:5 Methyl eicosapentaenoate (*cis*-5,8,11,14,17)
 27. C24:1 Methyl nervonate (*cis*-15)
 28. C22:6 Methyl docosahexaenoate (*cis*-4,7,10,13,16,19)

