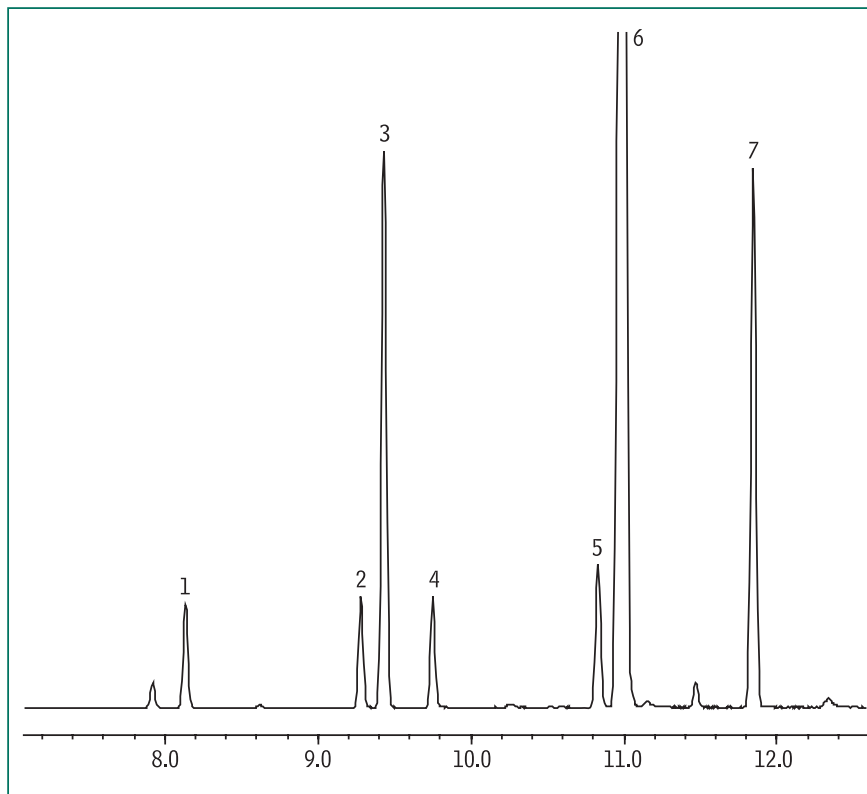


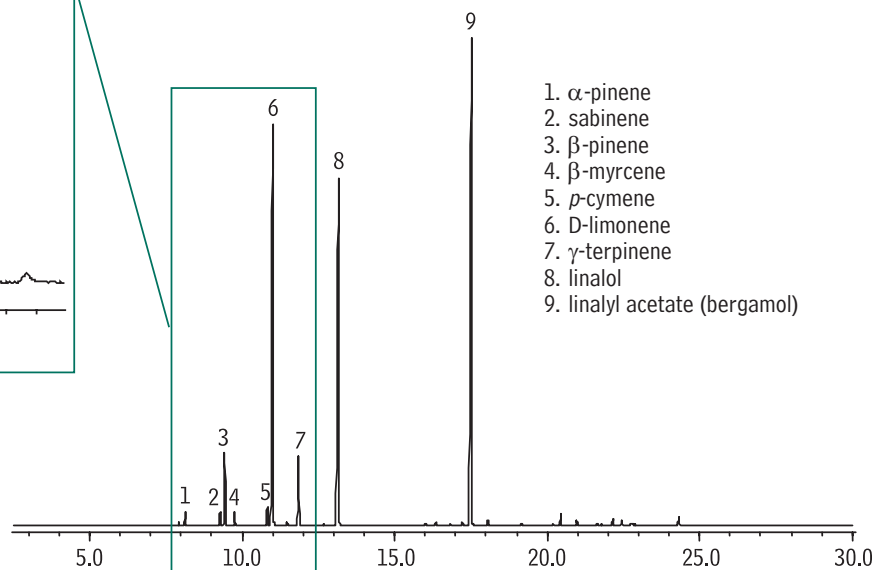
Bergamot Oil

Conventional GC/MS

Rtx®-5Sil MS



Column: Rtx®-5SilMS, 30m x 0.25mm ID, 0.25 μ m (cat. # 12723)
Sample: bergamot oil, 5% in acetone, 1 μ L injection
Instrument: Shimadzu GCMS-QP2010
Injector: split/splitless, 280°C
Injection mode: split, split ratio = 100:1
Carrier gas: helium
Flow control mode: constant linear velocity (36.0cm/sec)
Column inlet pressure: 46.7kPa @ 40°C
Oven: 40°C (0.5 min) – 5°C/min. – 300°C
Detector: Shimadzu QP 2010 MSD
Interface: Direct, 280°C
Ionization: electron impact
Mass range: 40-500 amu



1. α -pinene
2. sabinene
3. β -pinene
4. β -myrcene
5. *p*-cymene
6. D-limonene
7. γ -terpinene
8. linalol
9. linalyl acetate (bergamol)

GC_FF00848