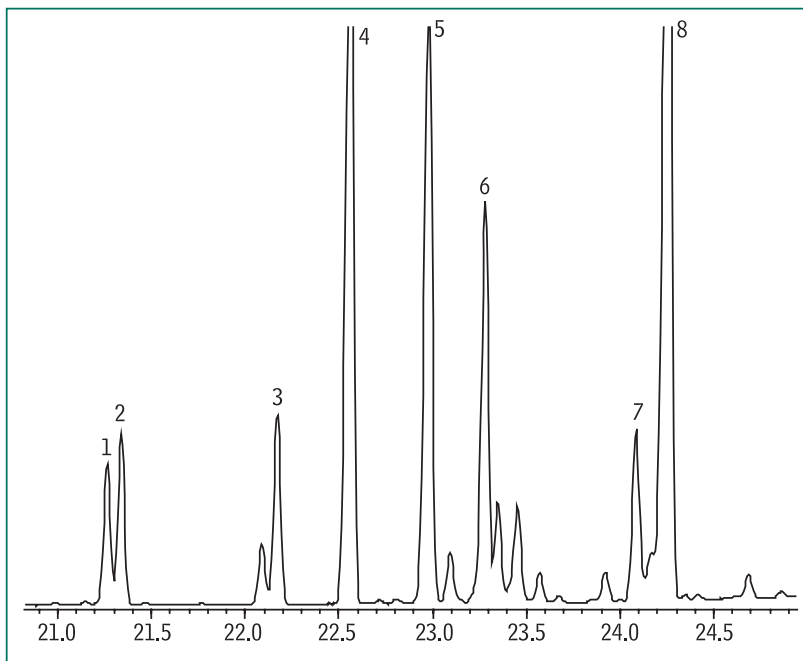
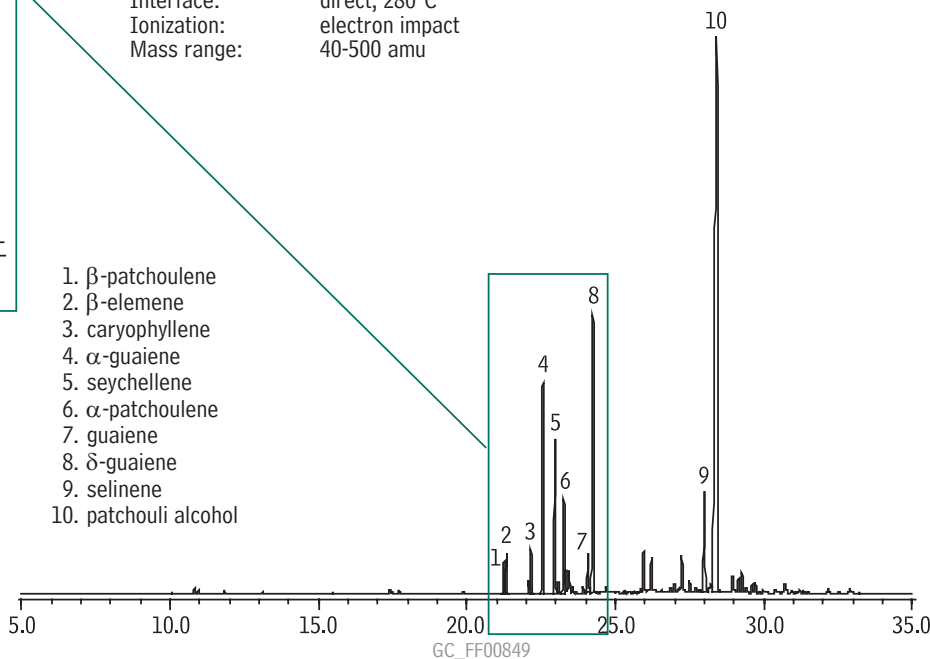


Patchouli Oil
Conventional GC/MS
Rtx®-5Sil MS



Column: Rtx®-5SilMS, 30m x 0.25mm ID, 0.25 μ m (cat. # 12723)
 Sample: patchouli oil, 5% in acetone, 1 μ L injection
 Instrument: Shimadzu GCMS-QP2010
 Injector: split/splitless, 280°C
 Injection mode: split, split ratio = 100:1
 Carrier gas: helium
 Flow control mode: constant linear velocity (36.0cm/sec)
 Column inlet pressure: 46.7kPa @ 40°C
 Oven: 40°C (0.5 min.) – 5°C/min. – 300°C
 Interface: direct, 280°C
 Ionization: electron impact
 Mass range: 40-500 amu



1. β -patchoulene
2. β -elemene
3. caryophyllene
4. α -guaiene
5. seychellene
6. α -patchoulene
7. guaieni
8. δ -guaiene
9. selinene
10. patchouli alcohol