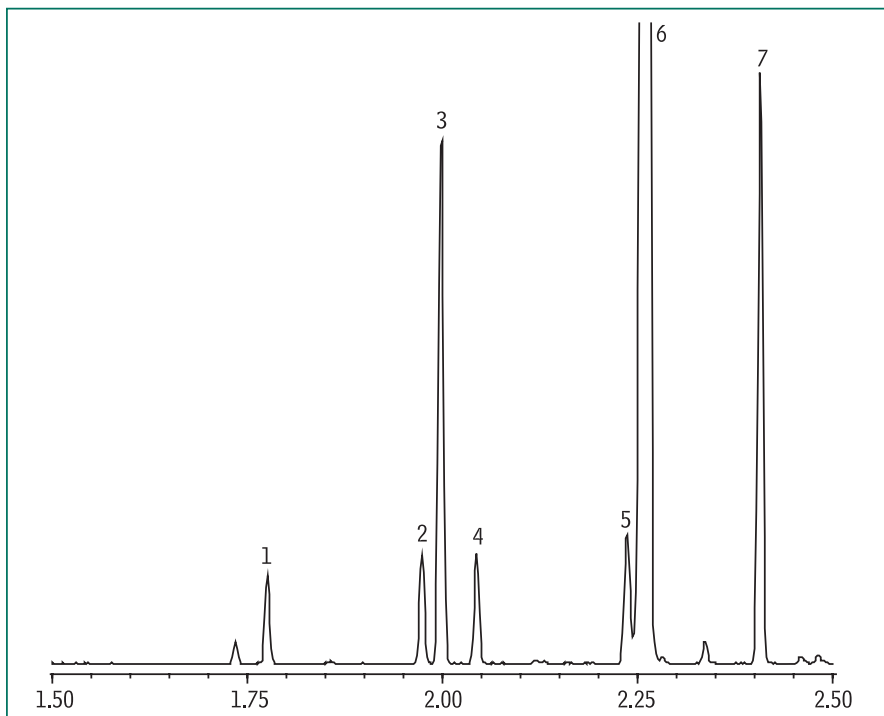


Bergamot Oil
Fast GC/MS
Rtx®-5



Column: Rtx®-5, 10m x 0.10mm ID, 0.10µm (cat. # 41201)
 Sample: bergamot oil, 5% in acetone, 0.2µL injection
 Instrument: Shimadzu GCMS-QP2010
 Injector: split/splitless, 280°C
 Injection mode: split, split ratio = 800:1
 Carrier gas: helium
 Flow control mode: constant linear velocity (60.0 cm/sec)
 Column inlet pressure: 421.5kPa @ 40°C
 Column oven: 40°C – 30°C/min. – 300°C
 Detector: Shimadzu QP 2010 MSD
 Interface: direct, 280°C
 Ionization: electron impact
 Mass range: 40-500 amu

