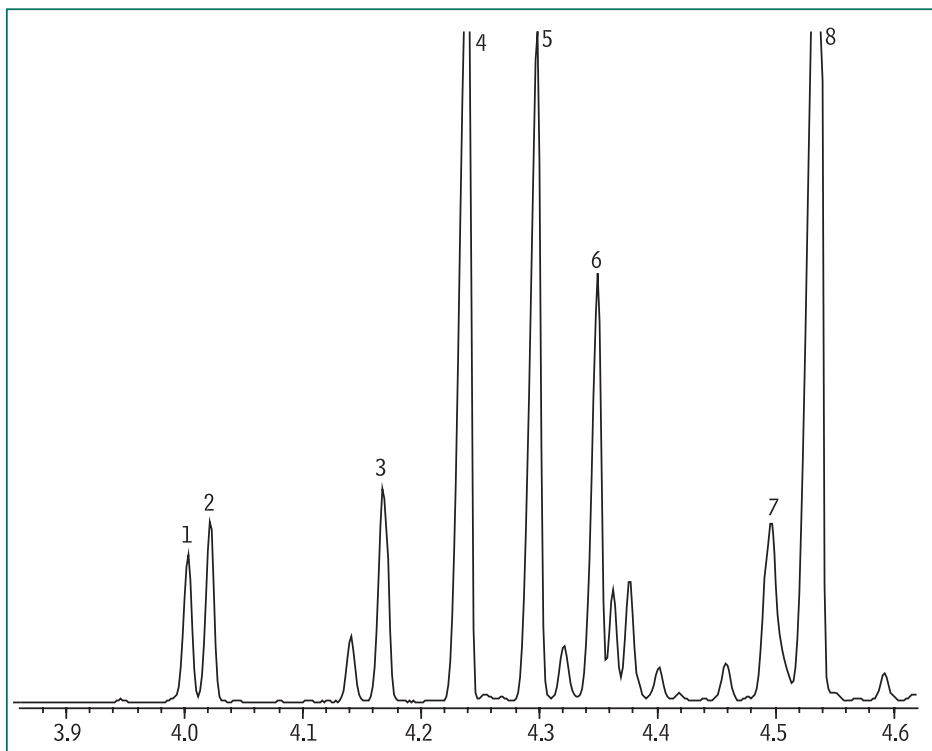


# Patchouli Oil

## Fast GC/MS

### Rtx®-5



Column: Rtx®-5, 10m x 0.10mm ID, 0.10 $\mu$ m (cat. # 41201)  
Sample: patchouli oil, 5% in acetone, 0.2 $\mu$ L injection  
Instrument: Shimadzu GCMS-QP2010  
Injector: split/splitless, 280°C  
Injection mode: split, split ratio = 800:1  
Carrier gas: helium  
Flow control mode: constant linear velocity (60.0cm/sec)  
Column inlet pressure: 421.5kPa @ 40°C  
Column oven: 40°C – 30°C/min. – 300°C  
Interface: direct, 280°C  
Ionization: electron impact  
Mass range: 40-500 amu

1.  $\beta$ -patchoulene
2.  $\beta$ -elemene
3. caryophyllene
4.  $\alpha$ -guaiene
5. seychellene
6.  $\alpha$ -patchoulene
7. guaiene
8.  $\delta$ -guaiene
9. selinene
10. patchouli alcohol

