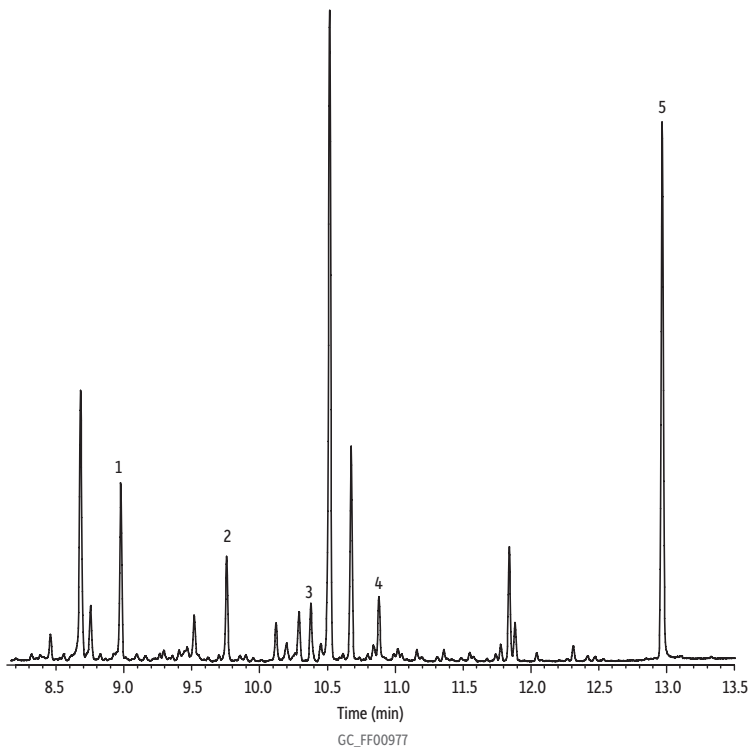


Melamine Spike in Cat Food on Rtx-5MS



Peaks

1. Cyanuric acid
2. Ammelide
3. Ammeline
4. Melamine
5. Benzoguanamine

Column Rtx-5MS, 30 m, 0.25 mm ID, 0.25 μ m (cat.# 12623)

Sample Melamine, cyanuric acid, ammelide, ammeline, benzoguanamine in dry cat food
10 μ g/mL prederivatized

Conc.:

Injection

Inj. Vol.: 1 μ L splitless (hold 1 min)

Liner: 3.5 mm splitless taper (cat.# 22286)

Inj. Temp.: 280 °C

Oven

Oven Temp.: 75 °C to 320 °C at 15 °C/min (hold 4 min)

Carrier Gas He, constant flow

Flow Rate: 1 mL/min

Detector

Mode: SIM

Transfer

Line Temp.: 290 °C

Ionization Mode: EI