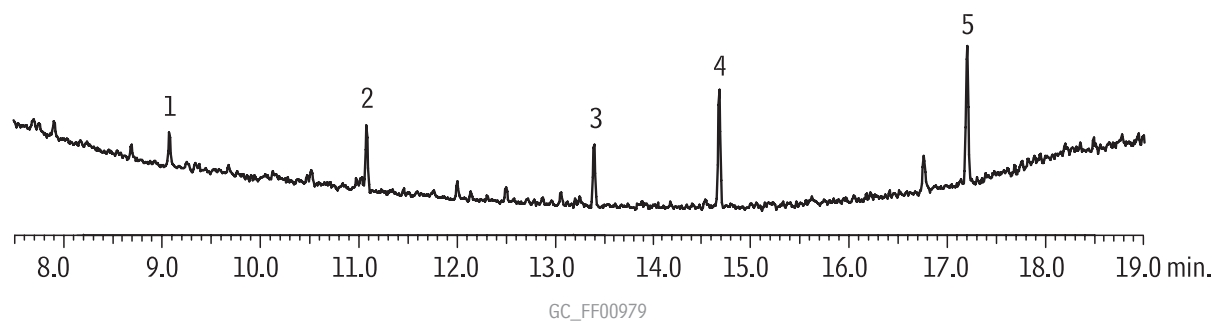


Melamine Spike Rtx®-5MS



1. cyanuric acid
2. ammelide
3. ammeline
4. melamine
5. benzoguanamine

Column: Rtx®-5MS, 30m, 0.25mm ID, 0.25 μ m (cat.# 12623)
Sample: melamine, cyanuric acid, ammelide, ammeline,
benzoguanamine (10 μ g/mL prederivatized)
Inj.: 1 μ L, splitless (hold 1 min.), 3.5mm splitless inlet liner
(cat.# 22286)
Inj. temp.: 280°C
Carrier gas: helium, constant flow
Flow rate: 1mL/min.
Oven temp.: 75°C (hold 1 min.) to 320°C (hold 4 min.) @ 15°C/min.
Det: MS
Transfer line temp.: 290°C
Scan range: 50-450 m/z
Ionization: EI
Mode: scan