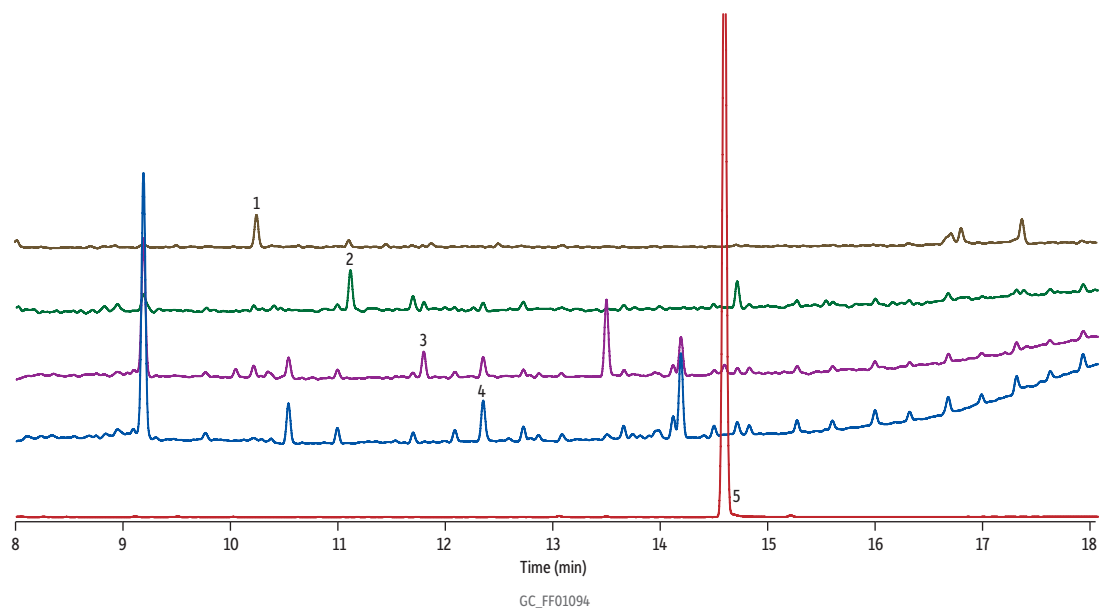


# Analysis of Melamine and Related Compounds on Rxi-5Sil MS



Peaks	tr (min)	Quant. Ion	Qual. Ion	Qual. Ion	Qual. Ion
1. Cyanuric acid	10.238	345	330	346	347
2. Ammelide	11.090	344	329	345	330
3. Ammeline	11.770	328	343	329	344
4. Melamine	12.318	327	342	328	343
5. Benzoguanamine	14.553	316	331	332	330

**Column** Rxi-5Sil MS w/5 m Integra-Guard column, 30 m, 0.25 mm ID, 0.25  $\mu$ m (cat.# 13623-124)  
**Sample** Melamine and related analogs stock standard (cat.# 33253)  
 Benzoguanamine (cat.# 33251)  
**Conc.:** 0.01  $\mu$ g/mL as tri-TMS derivatives  
**Injection**  
 Inj. Vol.: 1.0  $\mu$ L splitless (hold 1 min)  
 Liner: 3.5 mm Gooseneck Splitless w/Wool (cat.# 22286-200.1)  
 Inj. Temp.: 280  $^{\circ}$ C  
**Oven**  
 Oven Temp.: 75  $^{\circ}$ C to 320  $^{\circ}$ C at 15  $^{\circ}$ C/min (hold 4 min)  
**Carrier Gas** He, constant flow  
 Flow Rate: 1 mL/min  
**Detector** MS  
 Mode: SIM  
 Transfer  
 Line Temp.: 290  $^{\circ}$ C  
 Ionization Mode: EI  
**Instrument** Shimadzu 2010 GC & QP2010+ MS  
**Notes** all method ions in table, only quantification ions were plotted