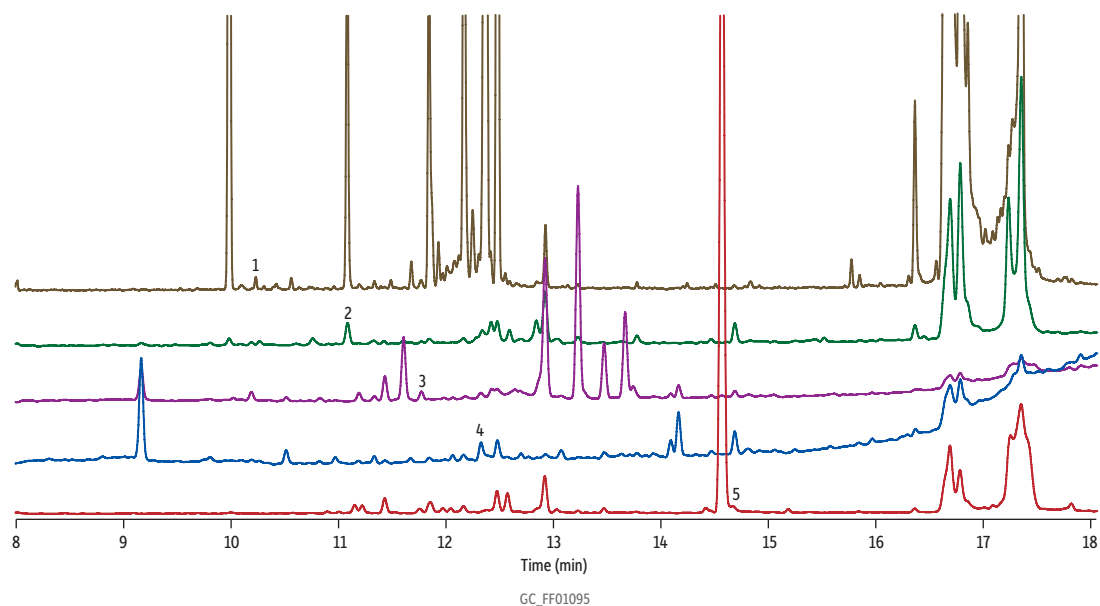


Analysis of Melamine and Related Compounds in Infant Formula on Rxi-5Sil MS



| Peaks | tr (min) | Quant. Ion | Qual. Ion | Qual. Ion | Qual. Ion |
|-------------------|----------|------------|-----------|-----------|-----------|
| 1. Cyanuric acid | 10.258 | 345 | 330 | 346 | 347 |
| 2. Ammelide | 11.073 | 344 | 329 | 345 | 330 |
| 3. Ammeline | 11.760 | 328 | 343 | 329 | 344 |
| 4. Melamine | 12.328 | 327 | 342 | 328 | 343 |
| 5. Benzoguanamine | 14.538 | 316 | 331 | 332 | 330 |

Column Rxi-5Sil MS w/5 m Integra-Guard column, 30 m, 0.25 mm ID, 0.25 µm (cat.# 13623-124)
Sample Infant formula fortified at 1 µg/g with melamine and related analogs stock standard (cat.# 33253)
 Benzoguanamine (cat.# 33251)
Conc.: 0.01 µg/mL as tri-TMS derivatives
Injection
 Inj. Vol.: 1.0 µL splitless (hold 1 min)
 Liner: 3.5 mm Gooseneck Splitless w/Wool (cat.# 22286-200.1)
 Inj. Temp.: 280 °C
Oven
 Oven Temp.: 75 °C to 320 °C at 15 °C/min (hold 4 min)
Carrier Gas He, constant flow
 Flow Rate: 1 mL/min
Detector MS
 Mode: SIM
 Transfer
 Line Temp.: 290 °C
 Ionization Mode: EI
Instrument Shimadzu 2010 GC & QP2010+ MS
Notes all method ions in table, only quantification ions were plotted