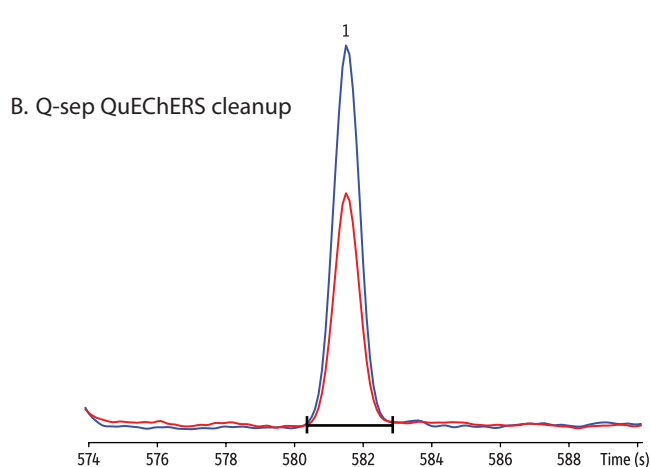
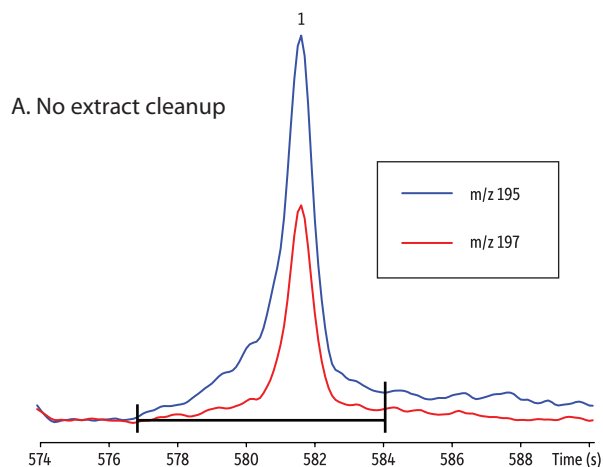


# Pesticides in QuEChERS Extract of Sweet Potato on Rxi-5Sil MS



GC\_FF01133-34

## Peak List

1. Endosulfan I

|                           |                                                                                                                                                                                           |
|---------------------------|-------------------------------------------------------------------------------------------------------------------------------------------------------------------------------------------|
| <b>Column</b>             | Rxi-5Sil MS, 20 m, 0.18 mm ID, 0.18 $\mu$ m (cat.# 43602)                                                                                                                                 |
| <b>Standard/Sample</b>    | Sweet potato spiked with pesticide mix and extracted with acetonitrile and Q-sep QuEChERS extraction salts                                                                                |
| <b>Injection</b>          |                                                                                                                                                                                           |
| Inj. Vol.:                | 1 $\mu$ L splitless (hold 1 min)                                                                                                                                                          |
| Liner:                    | Gooseneck splitless (4 mm) w/deact. wool (cat.# 22405)                                                                                                                                    |
| Inj. Temp.:               | 250 $^{\circ}$ C                                                                                                                                                                          |
| Purge Flow:               | 40 mL/min                                                                                                                                                                                 |
| <b>Oven</b>               |                                                                                                                                                                                           |
| Oven Temp.:               | 72.5 $^{\circ}$ C (hold 1 min) to 350 $^{\circ}$ C at 20 $^{\circ}$ C/min                                                                                                                 |
| <b>Carrier Gas</b>        | He, constant flow                                                                                                                                                                         |
| Flow Rate:                | 1.2 mL/min                                                                                                                                                                                |
| <b>Detector</b>           | TOFMS                                                                                                                                                                                     |
| Transfer Line Temp.:      | 300 $^{\circ}$ C                                                                                                                                                                          |
| Analyzer Type:            | TOF                                                                                                                                                                                       |
| Source Temp.:             | 225 $^{\circ}$ C                                                                                                                                                                          |
| Electron Energy:          | 70 eV                                                                                                                                                                                     |
| Mass Defect:              | -20 mu/100 u                                                                                                                                                                              |
| Solvent Delay Time:       | 3 min                                                                                                                                                                                     |
| Tune Type:                | PFTBA                                                                                                                                                                                     |
| Ionization Mode:          | EI                                                                                                                                                                                        |
| Scan Range:               | 45 to 550 amu                                                                                                                                                                             |
| Scan Rate:                | 10 scans/sec                                                                                                                                                                              |
| <b>Instrument</b>         | LECO Pegasus III GC-TOFMS                                                                                                                                                                 |
| <b>Sample Preparation</b> | A. Extract (without cleanup step) acidified with formic acid to pH 5.<br>B. Extract with cleanup using Q-sep QuEChERS dSPE cleanup tube (cat.# 26124) acidified with formic acid to pH 5. |