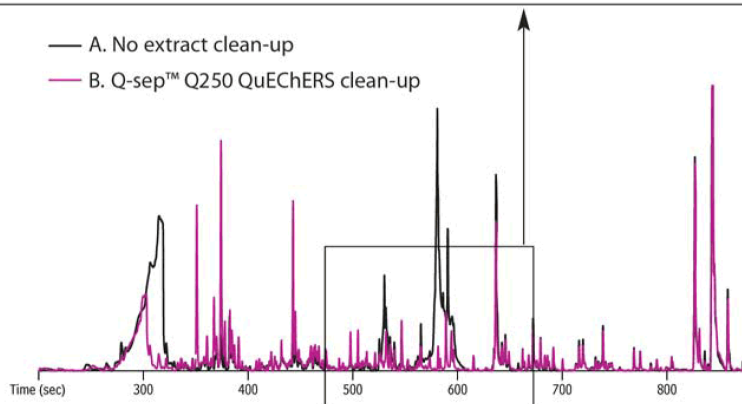
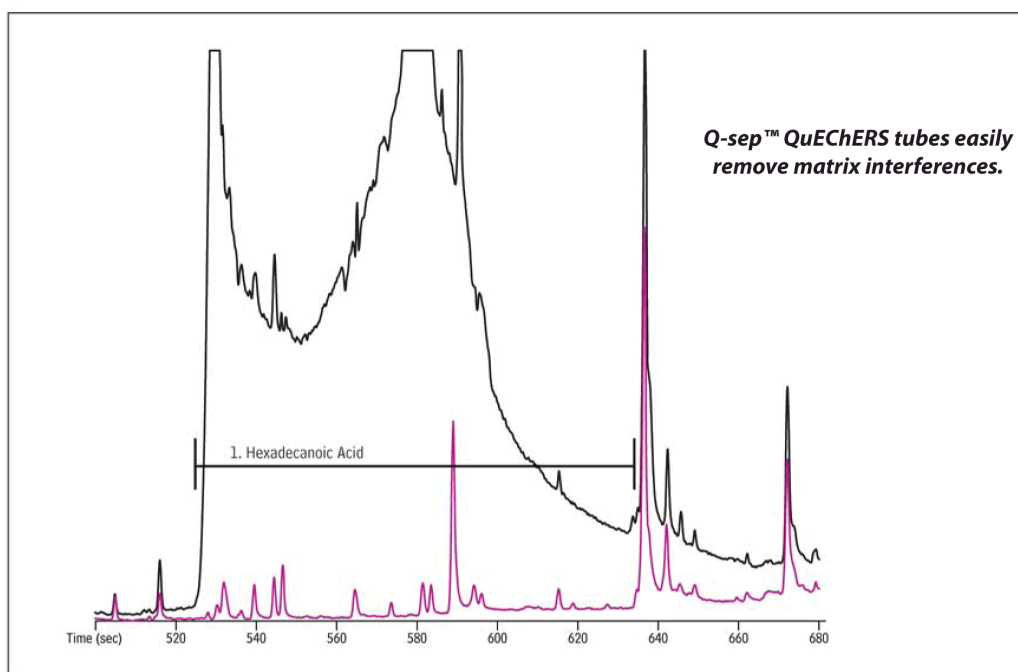


Pesticides in QuEChERS Extract of Sweet Potato on Rxi-5Sil MS



GC_FF1125

Column	Rxi-5Sil MS, 20 m, 0.18 mm ID, 0.18 μ m (cat.# 43602)
Standard/Sample	Sweet potato spiked with pesticide mix, extracted with acetonitrile and Q-sep Q110 QuEChERS extraction tube (cat.# 26213)
Diluent:	Acetonitrile
Injection	
Inj. Vol.:	1 μ L splitless (hold 1 min)
Liner:	Gooseneck Splitless (4mm) w/Wool (cat.# 22405)
Inj. Temp.:	250 °C
Purge Flow:	40 mL/min
Oven	
Oven Temp.:	72.5 °C (hold 1 min) to 350 °C at 20 °C/min
Carrier Gas	He, constant flow
Flow Rate:	1.2 mL/min
Detector	TOFMS
Transfer Line Temp.:	300 °C
Analyzer Type:	TOF
Source Temp.:	225 °C
Electron Energy:	70 eV
Mass Defect:	-20 mu/100 u
Solvent Delay Time:	3 min
Tune Type:	PFTBA
Ionization Mode:	EI
Scan Range:	45-550 amu
Scan Rate:	10 scans/sec
Instrument	LECO Pegasus III GC-TOFMS
Sample Preparation	A. extract (without cleanup step) acidified with formic acid to pH 5. B. extract with cleanup using Q-sep Q250 QuEChERS dSPE clean-up tube (cat.# 26124), acidified with formic acid to pH 5.
Notes	m/z plotted: 60, 73, 87, 129, 256