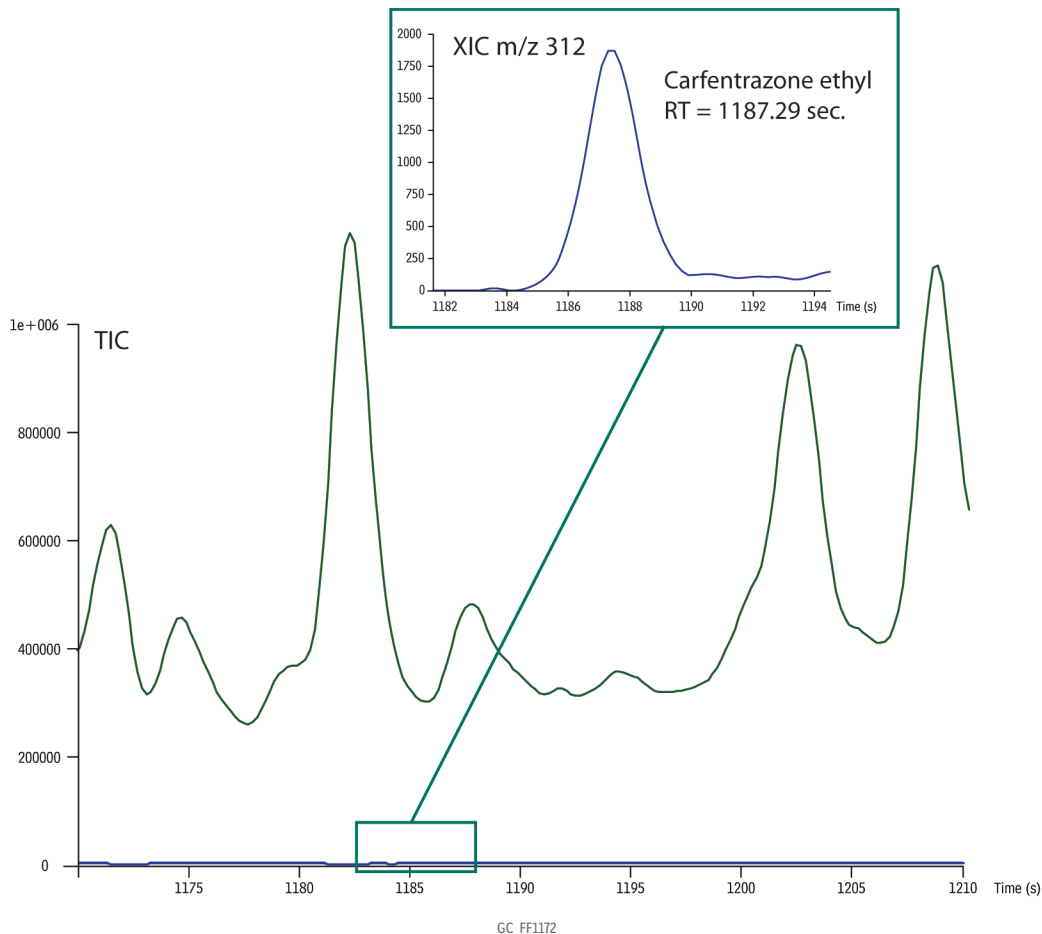


# Carfentrazone Ethyl in Dandelion Root Powder (Dietary Supplement) on Rxi-5Sil MS



<b>Column</b>	Rxi-5Sil MS, 30 m, 0.25 mm ID, 0.25 $\mu$ m (cat.# 13623)
<b>Standard/Sample</b>	Dandelion root powder spiked with 46 pesticides QuEChERS internal standard mix for GC/MS analysis (cat.# 33267) Anthracene for quality control (cat.# 33264)
<b>Diluent:</b>	Toluene
<b>Conc.:</b>	80 pg/ $\mu$ L
<b>Injection</b>	
Inj. Vol.:	1 $\mu$ L splitless (hold 1.5 min)
Liner:	5 mm Splitless with wool
Inj. Temp.:	250 $^{\circ}$ C
<b>Oven</b>	
Oven Temp.:	90 $^{\circ}$ C (hold 1.5 min) to 340 $^{\circ}$ C at 8 $^{\circ}$ C/min
Carrier Gas:	He, constant flow
Flow Rate:	1.5 mL/min
<b>Detector</b>	MS
<b>Mode:</b>	
Analyzer Type:	TOF
Source Temp.:	225 $^{\circ}$ C
Electron Energy:	70 eV
Ionization Mode:	EI
Acquisition Range:	45-550 amu
Spectral Acquisition Rate:	5 spectra/sec.
<b>Instrument</b>	LECO Pegasus 4D GCxGC-TOFMS
<b>Sample Preparation</b>	<i>Wetting:</i> 1 g of dandelion root powder combined with 9 mL of water, shaken well, fortified with pesticides and QuEChERS internal standard mix for GC/MS analysis (cat.# 33267), soak for 2 hours. <i>Extraction:</i> 10 mL acetonitrile added then addition of Q-sep Q110 (cat.# 26213), centrifuge with Q-sep 3000 centrifuge (cat.# 26230). <i>cSPE:</i> add control standard anthracene (cat.# 33264) to 1 mL extract, add magnesium sulfate to cartridge, use 6 mL combo SPE cartridge containing 500 mg CarboPrep 90/500 mg PSA (cat.# 26194), concentrate via evaporation.
<b>Notes</b>	Liner cat.# 22975-200.1, Q-sep extraction salts cat.# 26213, and a Q-sep 3000 centrifuge cat.# 26230 were used to produce this chromatogram, but have since been discontinued. For assistance choosing a replacement for this application, contact Restek Technical Service or your local Restek representative. ----- Purge valve time: 1.5 min Detector mode: full mass range