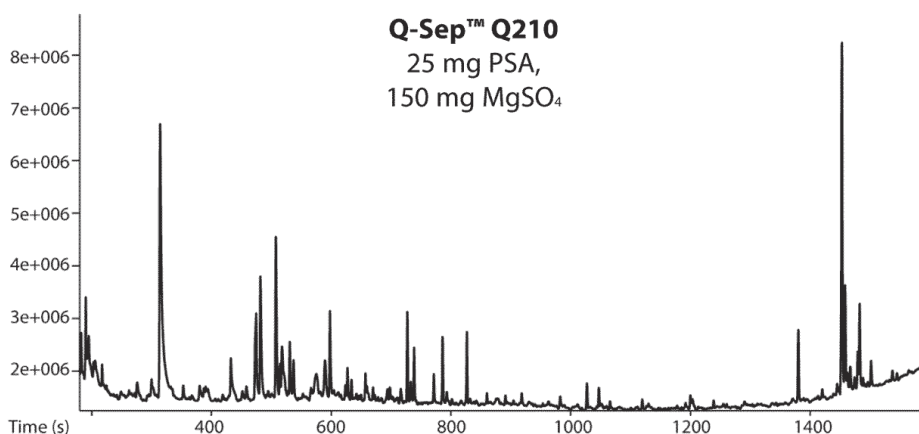
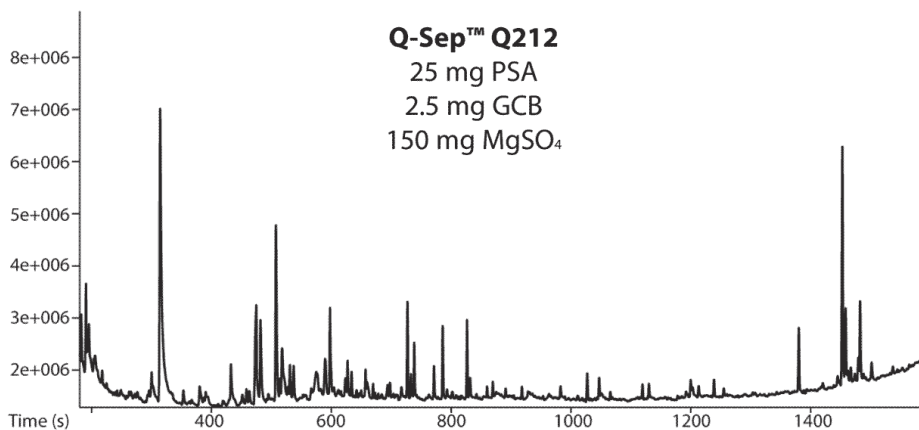


## Comparison of Strawberry Extracts (TICs) Processed with Different QuEChERS dSPE Sorbents on Rxi-5Sil MS



GC\_FF1199

<b>Column</b>	Rxi-5Sil MS, 30 m, 0.25 mm ID, 0.25 µm (cat.# 13623)
<b>Standard/Sample</b>	Strawberries processed with QuEChERS sample preparation QuEChERS internal standard mix for GC/MS analysis (cat.# 33267) Anthracene for quality control (cat.# 33264)
<b>Diluent:</b>	Acetonitrile
<b>Injection</b>	
Inj. Vol.:	1 µL splitless (hold 1.5 min)
Liner:	Gooseneck splitless (5 mm) (cat.# 22974-207)
Inj. Temp.:	250 °C
<b>Oven</b>	
Oven Temp.:	90 °C (hold 1.5 min) to 340 °C at 10 °C/min
<b>Carrier Gas</b>	He, constant flow
Flow Rate:	2 mL/min
<b>Detector</b>	MS
Mode:	
Analyzer Type:	TOF
Source Temp.:	225 °C
Electron Energy:	70 eV
Ionization Mode:	EI
Acquisition Range:	45-550 amu
Spectral Acquisition Rate:	5 spectra/sec
<b>Instrument</b>	LECO Pegasus 4D GCxGC-TOFMS
<b>Sample Preparation</b>	<i>Sample:</i> 10 g of homogenized strawberries, fortified with pesticides and QuEChERS internal standard mix for GC/MS analysis (cat.# 33267). <i>Extraction:</i> 10 mL acetonitrile added, 1 minute shake, then addition of Q-sep Q110 (cat.# 26235), 1 minute shake, centrifuge with Q-sep 3000 centrifuge (cat.# 26230). <i>dSPE:</i> Cleanup procedure according to EN 15662 method, add control standard anthracene (cat.# 33264) to 1 mL extract, add this to one of two different Q-sep dSPE tubes (either cat.# 26215 or cat.# 26217), shake, centrifuge.
<b>Notes</b>	Q-sep packet cat.# 26235 and a Q-sep 3000 centrifuge cat.# 26230 were used to produce this chromatogram, but have since been discontinued. For assistance choosing a replacement for this application, contact Restek Technical Service or your local Restek representative.