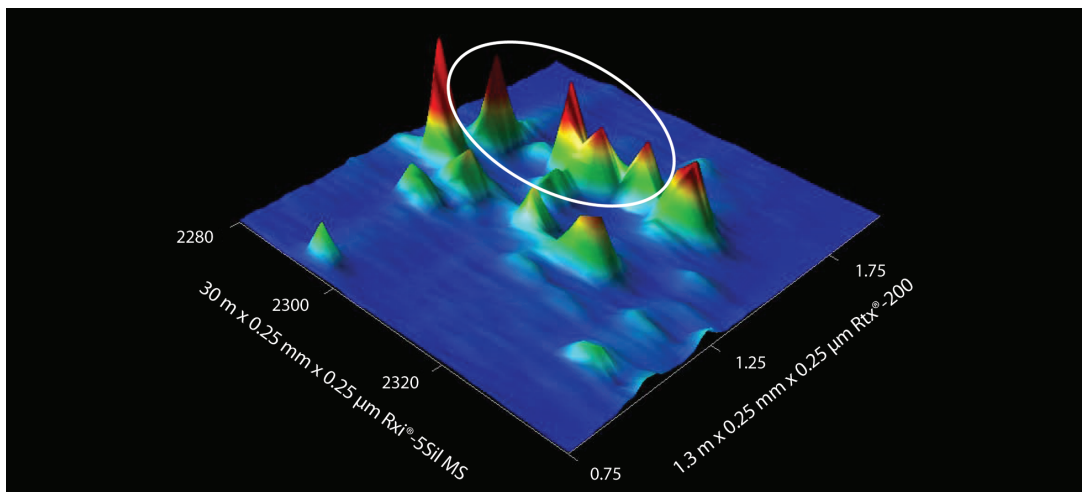


Incurred Cypermethrins in a QuEChERS Extract of Marijuana by GCxGC on Rxi-5Sil MS and Rtx-200

Peaks	tr1 (sec)	tr 2 (sec)
1. Cypermethrin 1	2,292	1.50
2. Cypermethrin 2	2,304	1.54
3. Cypermethrin 3	2,310	1.53
4. Cypermethrin 4	2,313	1.58



GC_FF1204

Column	Rxi-5Sil MS 30 m, 0.25 mm ID, 0.25 μ m (cat.# 13623) Rtx-200 1.3 m, 0.25 mm ID, 0.25 μ m (cat.# 15020)	Detector	TOFMS
Sample		Transfer Line Temp.:	290 °C
Diluent:	Toluene	Analyzer Type:	TOF
Injection		Source Temp.:	225 °C
Inj. Vol.:	1 μ L splitless (hold 1 min)	Electron Energy:	70 eV
Liner:	Premium 4 mm Single Taper w/Wool (cat.# 23303)	Mass Defect:	-20 mu/100 u
Inj. Temp.:	250 °C	Solvent Delay Time:	5 min
Purge Flow:	40 mL/min	Tune Type:	PFTBA
Oven		Ionization Mode:	EI
Oven Temp:	Rxi-5Sil MS: 80 °C (hold 1 min) to 310 °C at 5 °C/min Rtx-200: 85 °C (hold 1 min) to 315 °C at 5 °C/min He, corrected constant flow (2 mL/min)	Acquisition Range:	45-550 amu
Carrier Gas		Spectral Acquisition Rate:	100 spectra/sec
Modulation		Instrument	LECO Pegasus 4D GCxGC-TOFMS
Modulator Temp. Offset:	20 °C	Notes	Rtx-200 (cat.# 15020) is a 15 m column. A 1.3 m section was used here as the second dimension column.
Second Dimension			
Separation Time:	3 sec		
Hot Pulse Time:	0.9 sec		
Cool Time between Stages:	0.6 sec		