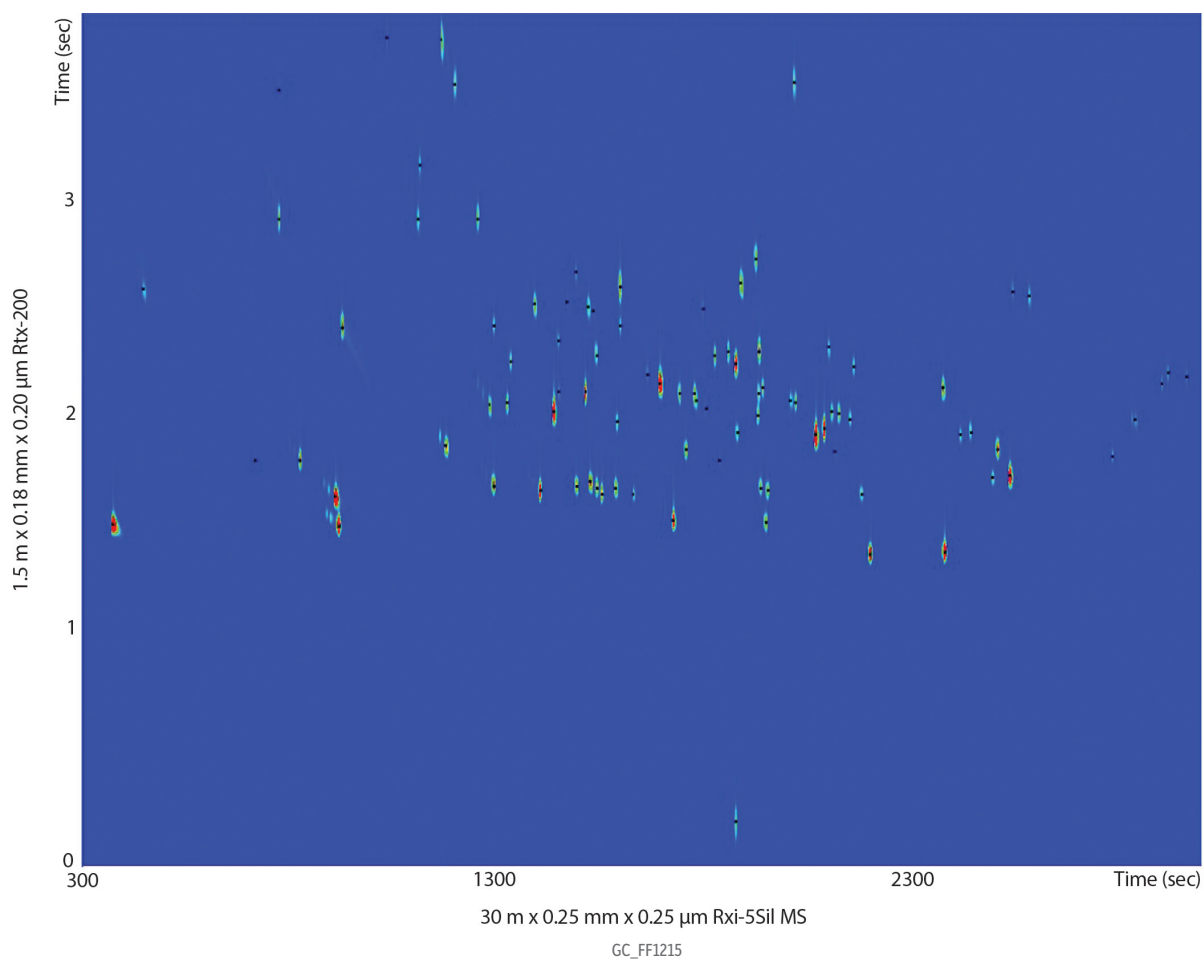


Select Carbamate, Organophosphorus, Aniline, Conazole, Phenylurea, Strobilurin, and Triazine Pesticides by GCxGC-TOFMS Using Rxi-5Sil MS and Rtx-200



Column Rxi-5Sil MS 30 m, 0.25 mm ID, 0.25 μm (cat.# 13623)
Rtx-200 1.5 m, 0.18 mm ID, 0.20 μm (cat.# 45001)

Sample Pesticide standard

Diluent: Acetonitrile

Injection
Inj. Vol.: 1 μL splitless (hold 1 min)
Liner: Gooseneck splitless (5 mm) w/deactivated wool (cat.# 22974-207)

Inj. Temp.: 250 °C
Purge Flow: 40 mL/min

Oven
Oven Temp: Rxi-5Sil MS: 90 °C (hold 1 min) to 310 °C at 4 °C/min (hold 2 min)
Rtx-200: 100 °C (hold 1 min) to 320 °C at 4 °C/min (hold 2 min)
He, corrected constant flow (1.8 mL/min)

Carrier Gas
Modulation
Modulator Temp. Offset: 25 °C
Second Dimension
Separation Time: 4 sec
Hot Pulse Time: 1.2 sec
Cool Time between Stages: 0.8 sec

Detector TOFMS
Transfer Line Temp.: 290 °C
Analyzer Type: TOF
Source Temp.: 225 °C
Electron Energy: 70 eV
Mass Defect: -20 mu/100 u
Solvent Delay Time: 5 min
Tune Type: PFTBA
Ionization Mode: EI
Acquisition Range: 45-550 amu
Spectral Acquisition Rate: 100 spectra/sec

Instrument LECO Pegasus 4D GCxGC-TOFMS
Notes Rtx-200 (cat.# 45001) is a 10 m column. A 1.5 m section was cut off and used as the second dimension column.