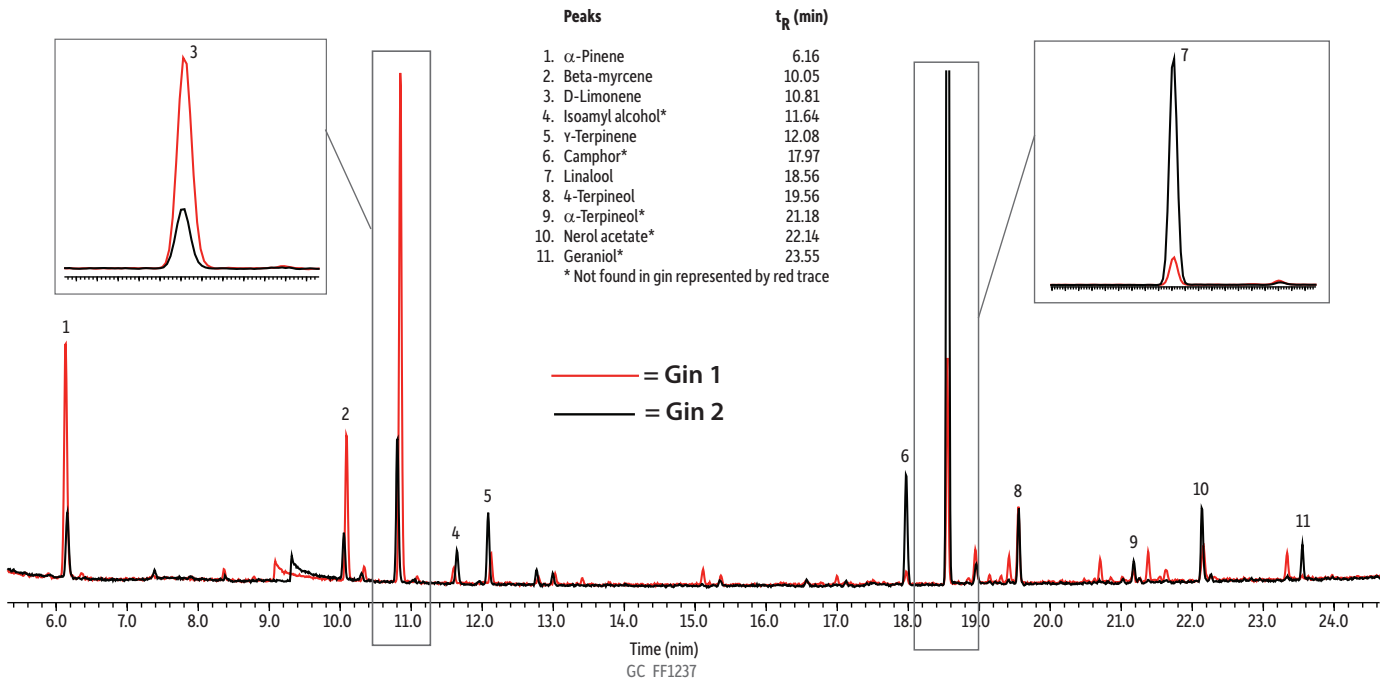


Two Brands of Gin on Stabilwax®-MS (Overlay)



Column Stabilwax®-MS, 30 m, 0.25 mm ID, 0.25 μ m (cat.# 10673)

Sample Conc.: Two different brands of gin
Neat

Injection
Inj. Vol.: 1 μ L split (split ratio 20:1)
Liner: Premium 3.5 mm Precision® liner w/wool (cat.# 23320.1)

Inj. Temp.: 250 °C

Oven

Oven Temp.: 35 °C (hold 5 min) to 250 °C at 7 °C/min (hold 5 min)

Carrier Gas He, constant linear velocity

Linear Velocity: 36 cm/sec

Detector MS

Mode: Scan

Scan Program:

Group	Start Time (min)	Scan Range (amu)	Scan Rate (scans/sec)
1	0.5	40-550	2

Transfer Line

Temp.: 260 °C

Analyzer Type: Quadrupole

Source Temp.: 250 °C

Solvent Delay

Time: 0.5 min

Ionization Mode: EI

Instrument Shimadzu 2010 GC & QP2010+ MS