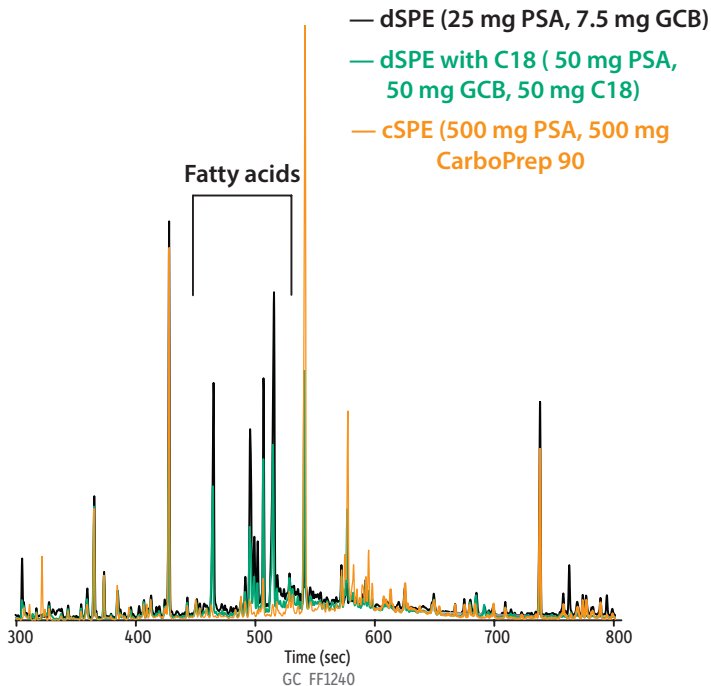


GC-FID Overlay of Tobacco Extracts to Evaluate Different Cleanups



Column	Rxi-5Sil MS, 15 m, 0.25 mm ID, 0.25 μ m (cat.# 13620)	Carrier Gas	He, constant flow
Sample Injection	Tobacco extracts	Flow Rate:	2 mL/min
Inj. Vol.:	1 μ L splitless (hold 0.75 min)	Detector	FID @ 350 °C
Liner:	Premium 4 mm single taper w/wool (cat.# 23303)	Constant Column +	
Inj. Temp.:	250 °C	Constant Make-up:	50 mL/min
Oven		Data Rate:	5 Hz
Oven Temp.:	80 °C (hold 1 min) to 350 °C at 20 °C/min (hold 5.5 min)	Instrument	Agilent/HP6890 GC