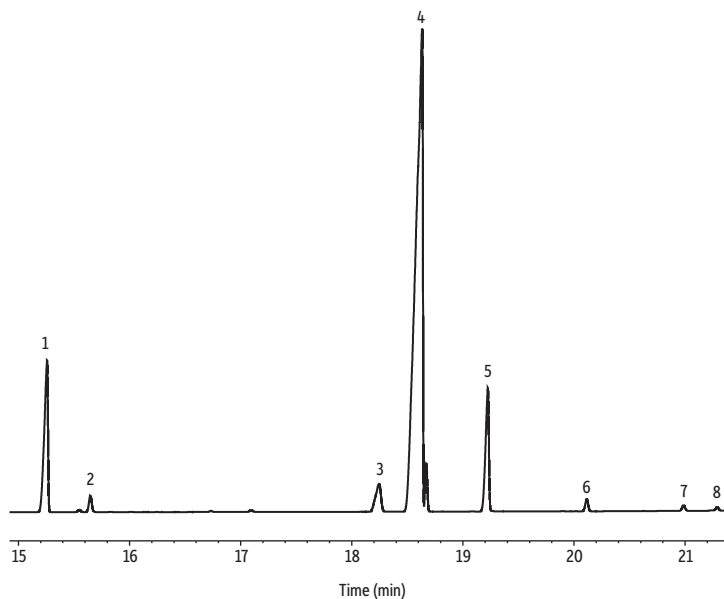


Olive Oil FAMES on Stabilwax



GC_FF1265

Peaks	ts (min)	Conc. (wt.%)	Structural Nomenclature
1. Methyl palmitate	15.256	11.9	C16:0
2. Methyl palmitoleate	15.646	1.0	C16:1 (<i>cis</i> -9)
3. Methyl stearate	18.244	3.2	C18:0
4. Methyl oleate	18.631	73.2	C18:1 (<i>cis</i> -9)
5. Methyl linoleate	19.223	8.9	C18:2 (<i>cis</i> -9,12)
6. Methyl linolenate	20.114	0.8	C18:3 (<i>cis</i> -9,12,15)
7. Methyl arachidate	20.985	0.5	C20:0
8. Methyl eicosenoate	21.287	0.4	C20:1 (<i>cis</i> -11)

Column Stabilwax, 60 m, 0.25 mm ID, 0.25 μ m (cat.# 10626)
Standard/Sample Olive oil reference standard (Sigma-Aldrich #47118)
Diluent: Hexane
Injection
 Inj. Vol.: 1 μ L split (split ratio 100:1)
 Liner: Topaz 4 mm ID straight inlet liner w/ wool (cat.# 23300)
 Inj. Temp.: 225 °C
Oven
 Oven Temp.: 120 °C (hold 0.5 min) to 250 °C at 6 °C/min (hold 15 min)
Carrier Gas H₂, constant flow
Flow Rate: 2 mL/min
Detector FID @ 250 °C
Instrument Agilent 7890A GC
Sample Preparation The sample was prepared using methanolic HCl.