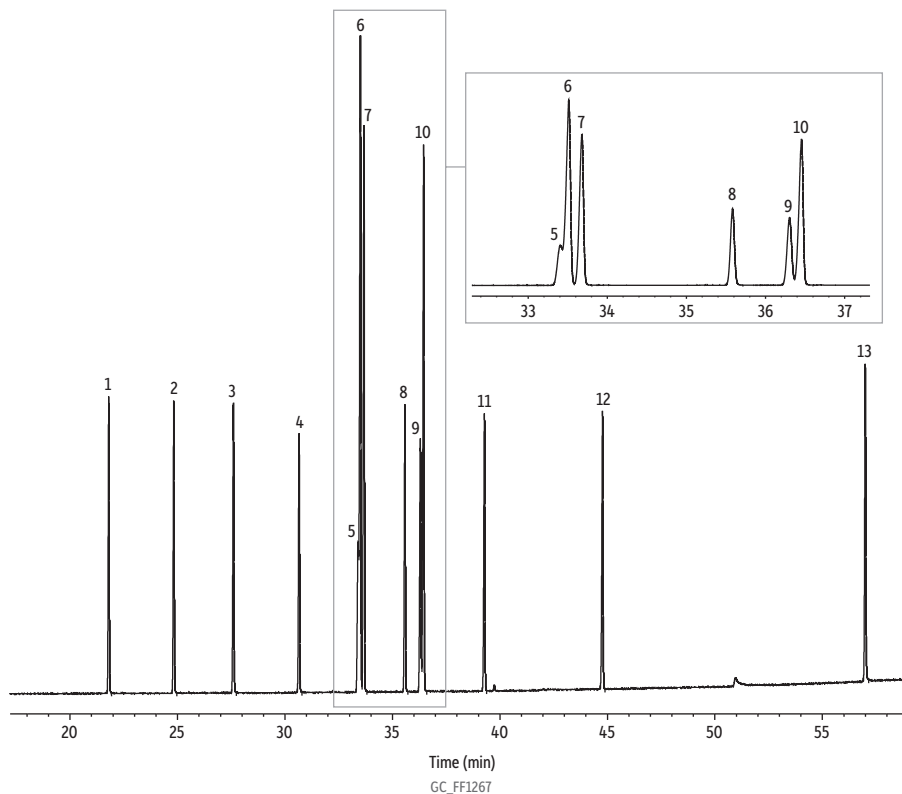


**trans Fat Reference Standard on Rt-2560**



**Column** Rt-2560, 100 m, 0.25 mm ID, 0.20  $\mu$ m (cat.# 13198)  
**Sample** trans Fat reference standard (cat.# 35629)  
**Diluent:** Hexane  
**Injection**  
 Inj. Vol.: 1  $\mu$ L split (split ratio 200:1)  
 Liner: Topaz 4.0 mm ID straight inlet liner w/wool (cat.# 23300)  
 Inj. Temp.: 250 °C  
**Oven**  
 Oven Temp.: 120 °C (hold 1 min) to 250 °C at 2 °C/min (hold 4 min)  
**Carrier Gas** H<sub>2</sub>, constant flow  
**Flow Rate:** 2 mL/min  
**Detector** FID @ 250 °C  
**Instrument** Agilent 7890A GC

**Peaks**

1. Methyl myristelaidate
2. Methyl trans-pentadecen-10-oate
3. Methyl palmitelaidate
4. Methyl trans-heptadecen-10-oate
5. Methyl petroselaidate
6. Methyl elaidate
7. Methyl trans-vaccenate
8. Methyl linoelaidate
9. Methyl trans-nonadecen-7-oate
10. Methyl trans-nonadecen-10-oate
11. Methyl trans-eicosan-11-oate
12. Methyl brassidate
13. Methyl ricinelaidate

Retention Time (min)	Conc. (wt.%)	Structural Nomenclature
21.806	6	C14:1 (trans-9)
24.832	6	C15:1 (trans-10)
27.605	6	C16:1 (trans-9)
30.660	6	C17:1 (trans-10)
33.407	4	C18:1 (trans-6)
33.513	16	C18:1 (trans-9)
33.679	12	C18:1 (trans-11)
35.583	6	C18:2 (trans-9,12)
36.303	6	C19:1 (trans-7)
36.455	12	C19:1 (trans-10)
39.270	6	C20:1 (trans-11)
44.764	6	C21:1 (trans-13)
56.987	8	C18:1 (trans-9; OH-12)