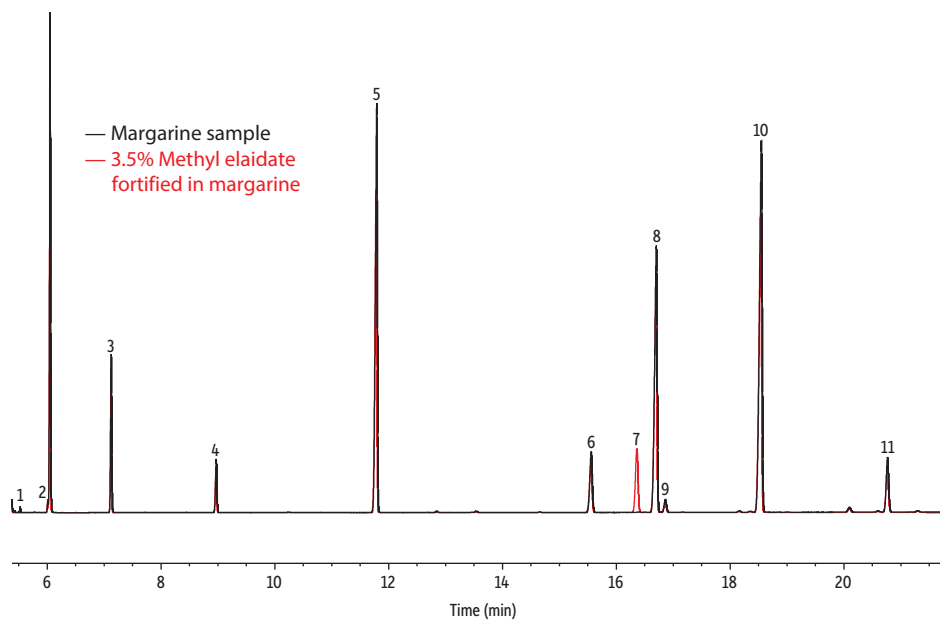


Margarine on Rtx-2330



GC_FF1268

Peaks	ts (min)	Structural Nomenclature
1. Methyl octanoate	5.377	C8:0
2. Methyl decanoate	6.010	C10:0
3. Methyl laurate	7.123	C12:0
4. Methyl myristate	8.968	C14:0
5. Methyl palmitate	11.788	C16:0
6. Methyl stearate	15.557	C18:0
7. Methyl elaidate	16.364	C18:1 <i>trans</i> -9
8. Methyl oleate	16.701	C18:1 <i>cis</i> -9
9. Methyl vaccenate	16.861	C18:1 <i>cis</i> -11
10. Methyl linoleate	18.547	C18:2 <i>cis</i> -9,12
11. Methyl linolenate	20.764	C18:3 <i>cis</i> -9,12,15

Column	Rtx-2330, 105 m, 0.25 mm ID, 0.20 µm (cat.# 10729)
Standard/Sample	Margarine stick
Diluent:	Hexane
Injection	
Inj. Vol.:	1 µL split (split ratio 100:1)
Liner:	Topaz 4 mm ID straight inlet liner w/wool (cat.# 23300)
Inj. Temp.:	250 °C
Oven	
Oven Temp.:	160 °C to 250 °C at 2 °C/min (hold 5 min)
Carrier Gas	H ₂ , constant flow
Flow Rate:	2 mL/min
Detector	FID @ 250 °C
Instrument	Agilent 7890A GC
Sample Preparation	The sample was prepared using sodium methoxide.