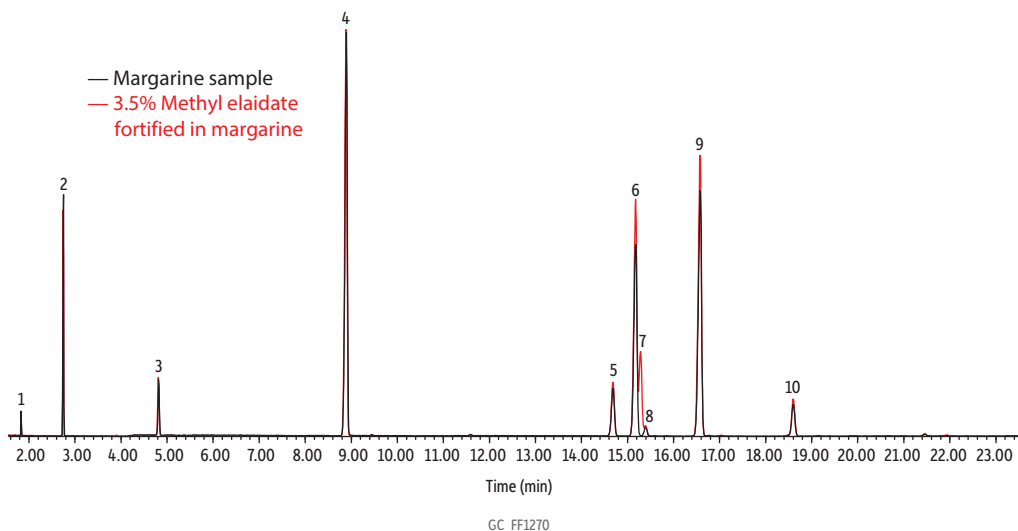


Margarine on FAMEWAX



Peaks	ts (min)	Structural Nomenclature
1. Methyl decanoate	1.834	C10:0
2. Methyl laurate	2.751	C12:0
3. Methyl myristate	4.821	C14:0
4. Methyl palmitate	8.898	C16:0
5. Methyl stearate	14.687	C18:0
6. Methyl oleate	15.180	C18:1 <i>cis</i> -9
7. Methyl elaidate	15.285	C18:1 <i>trans</i> -9
8. Methyl vaccenate	15.384	C18:1 <i>cis</i> -11
9. Methyl linoleate	16.582	C18:2 <i>cis</i> -9,12
10. Methyl linolenate	18.603	C18:3 <i>cis</i> -9,12,15

Column	FAMEWAX, 30 m, 0.25 mm ID, 0.25 μ m (cat.# 12497)
Standard/Sample Injection	Margarine stick
Inj. Vol.:	1 μ L split (split ratio 100:1)
Liner:	Topaz 4 mm ID straight inlet liner w/wool (cat.# 23300)
Inj. Temp.:	250 $^{\circ}$ C
Oven	
Oven Temp.:	160 $^{\circ}$ C to 240 $^{\circ}$ C at 2 $^{\circ}$ C/min (hold 1 min)
Carrier Gas	He, constant flow
Flow Rate:	1.4 mL/min
Detector	MS
Mode:	Scan
Transfer Line Temp.:	250 $^{\circ}$ C
Analyzer Type:	Quadrupole
Source Type:	Inert
Instrument	Agilent 7890A GC & 5975C MSD
Sample Preparation	The sample was prepared using sodium methoxide.