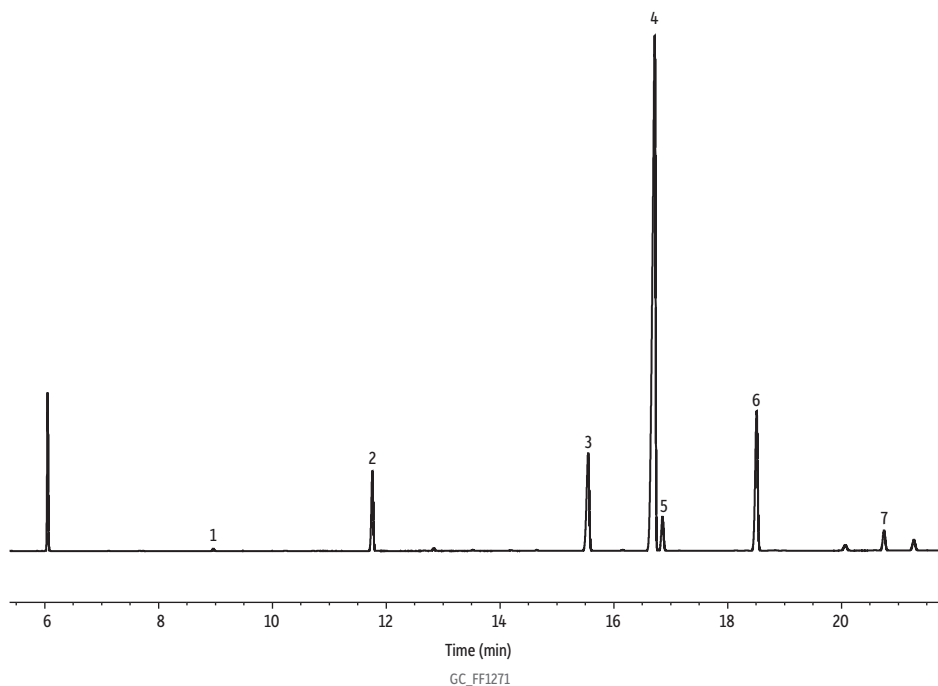


Butter Flavored Popcorn on Rtx-2330



Peaks	ts (min)	Structural Nomenclature
1. Methyl myristate	8.960	C14:0
2. Methyl palmitate	11.753	C16:0
3. Methyl stearate	15.545	C18:0
4. Methyl oleate	16.716	C18:1 <i>cis</i> -9
5. Methyl vaccenate	16.852	C18:1 <i>cis</i> -11
6. Methyl linoleate	18.507	C18:2 <i>cis</i> -9,12
7. Methyl linolenate	20.745	C18:3 <i>cis</i> -9,12,15

Column Rtx-2330, 105 m, 0.25 mm ID, 0.20 μ m (cat.# 10729)
Standard/Sample Butter flavored popcorn
Diluent: Hexane
Injection
 Inj. Vol.: 1 μ L split (split ratio 100:1)
 Liner: Topaz 4 mm ID straight inlet liner w/wool (cat.# 23300)
 Inj. Temp.: 250 $^{\circ}$ C
Oven
 Oven Temp.: 160 $^{\circ}$ C to 250 $^{\circ}$ C at 2 $^{\circ}$ C/min (hold 5 min)
Carrier Gas H₂, constant flow
Flow Rate: 2 mL/min
Detector FID @ 250 $^{\circ}$ C
Instrument Agilent 7890A GC
Sample Preparation The sample was prepared using sodium methoxide.