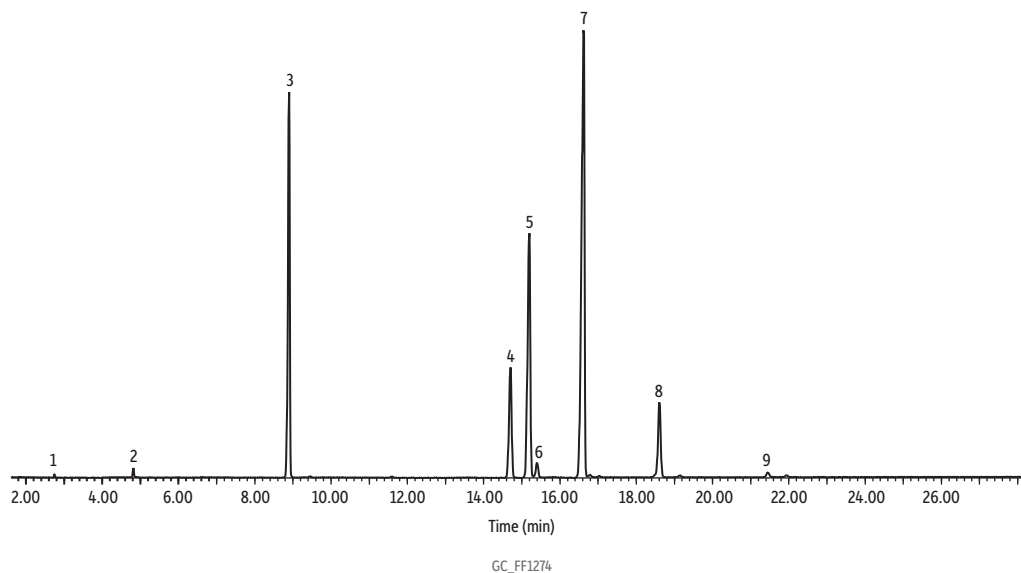


Shortening on FAMEWAX



Peaks	ts (min)	Structural Nomenclature
1. Methyl laurate	2.746	C12:0
2. Methyl myristate	4.815	C14:0
3. Methyl palmitate	8.895	C16:0
4. Methyl stearate	14.704	C18:0
5. Methyl oleate	15.195	C18:1 <i>cis</i> -9
6. Methyl vaccenate	15.400	C18:1 <i>cis</i> -11
7. Methyl linoleate	16.621	C18:2 <i>cis</i> -9,12
8. Methyl linolenate	18.607	C18:3 <i>cis</i> -9,12,15
9. Methyl arachidate	21.440	C20:0

Column	FAMEWAX, 30 m, 0.25 mm ID, 0.25 µm (cat.# 12497)
Standard/Sample	Shortening
Diluent:	Hexane
Injection	
Inj. Vol.:	1 µL split (split ratio 100:1)
Liner:	Topaz 4 mm ID straight inlet liner w/wool (cat.# 23300)
Inj. Temp.:	250 °C
Oven	
Oven Temp.:	160 °C to 240 °C at 2 °C/min (hold 1 min)
Carrier Gas	He, constant flow
Flow Rate:	1.4 mL/min
Detector	MS
Mode:	Scan
Transfer Line Temp.:	250 °C
Analyzer Type:	Quadrupole
Source Type:	Inert
Instrument	Agilent 7890A GC & 5975C MSD
Sample Preparation	The sample was prepared using sodium methoxide.