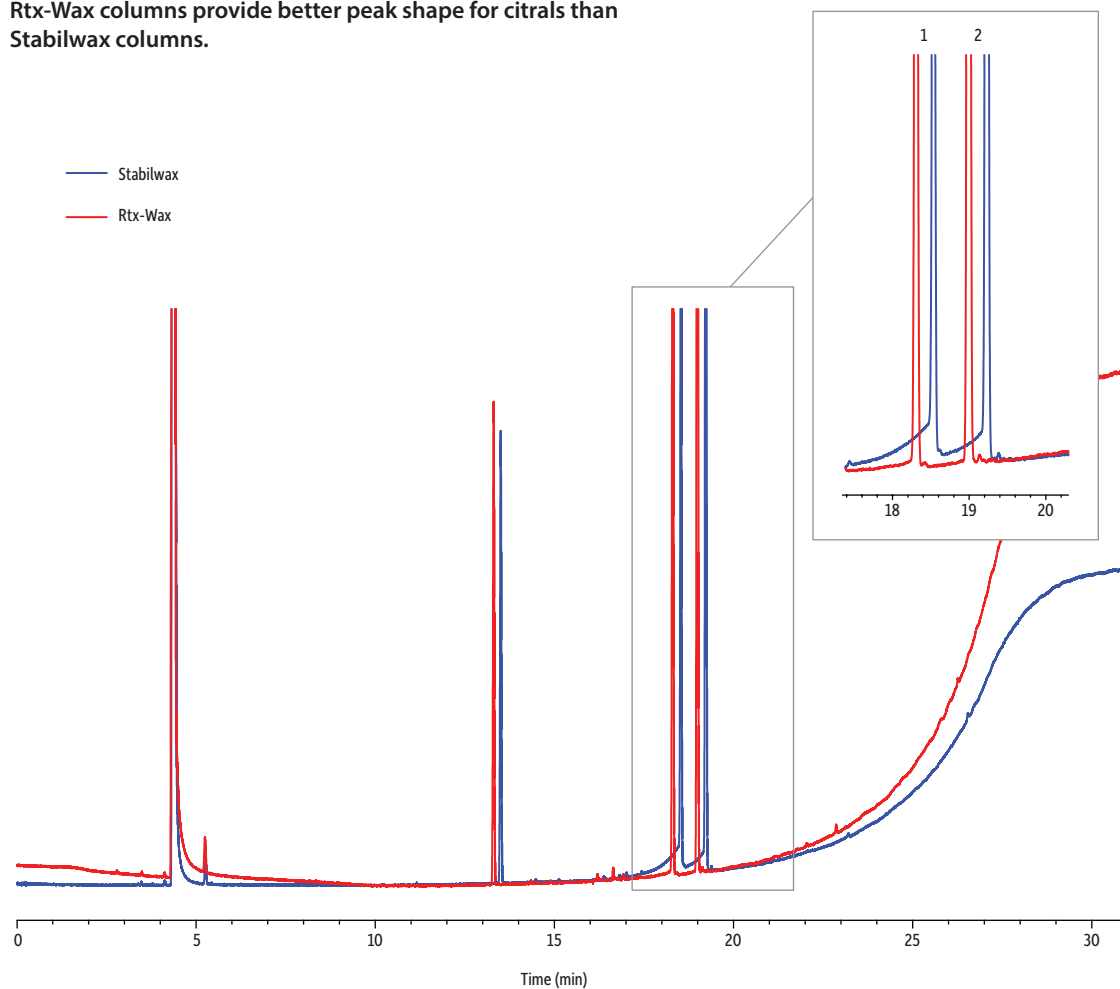


Citrals on Stabilwax

- Rtx-Wax columns provide better peak shape for citrals than Stabilwax columns.



GC_FF1280_GC_FF1282

Peaks	Rtx-Wax t_R	Stabilwax t_R
1. Citral B	18.30	18.53
2. Citral A	18.99	19.22

Column

Sample

Diluent:

Conc.:

Injection

Inj. Vol.:

Liner:

Inj. Temp.:

Split Vent Flow Rate:

Oven

Oven Temp.:

Carrier Gas

Flow Rate:

Linear Velocity:

Detector

Make-up Gas

Flow Rate:

Make-up Gas Type:

Hydrogen flow:

Air flow:

Data Rate:

Instrument

Notes

See notes

Custom citral standard

Acetone

1000 ppm

1 μ L split (split ratio 100:1)

Topaz 4.0 mm ID Precision inlet liner w/wool (cat.# 23305)

250 °C

106 mL/min

40 °C (hold 1 min) to 250 °C at 8 °C/min (hold 5 min)

He, constant flow

1.1 mL/min

19 cm/sec @ 40 °C

FID @ 250 °C

45 mL/min

N₂

40 mL/min

450 mL/min

20 Hz

Agilent/HP6890 GC

Column Details

Rtx-Wax, 30 m, 0.32 mm, 0.50 μ m (cat.# 12439)

Stabilwax, 30 m, 0.32 mm, 0.50 μ m (cat.# 10639)